

**HIDROSIB**  
S.A.



2400 Sibiu str.Stefan Cel Mare 193 -Romania

200 .. 600 l/min	<b>Supape de presiune Dn10,20,32</b>	<b>FC -10</b>
315 bar		

### **GENERALITATI**

Supape de presiune cu comanda pilotata cu montaj pe placa.  
 Scheme functionale diverse , conform tabelului 1.  
 Reglaj manual local cu roata de mana, surub sau cap gradat fara asigurare.  
 Supapa principala realizata in constructie tip cartus, cu locasul de montaj conform ISO/D7368 SI DIN 24342  
 Suprafata de montaj pe placa a supapei principale conform :  
 - ISO 5781 pentru schemele 04, 05, 06, 06 ED, 06EL, 07 si 16  
 - ISO 6264 numai pentru schemele 04, 06, 06 ED, 06EL  
 Pilotul realizat cu dimensiuni de montaj conform Iso 4401

### **CARACTERISTICI TEHNICE**

#### **GENERALE**

**Prinderea : pe placa**  
**Pozitia de montaj : indiferenta**  
**Schema functionala : vezi tabel 1**  
**Sensul de curgere : B-A pentru schema 16**  
**A-B pentru celelalte scheme**

**Temperatura mediului ambiant : -20°C.....+50°C**

#### **HIDRAULICE**

**Presiune nominala : 315 bar**  
**Presiuni de reglaj, pr: 7...315bar; 6...160 bar ,6.... 80 bar**  
**Debit maxim :schema 16: Dn10 ....150l/min , Dn20 ... 250l/min ,**  
**Dn32 ..... 400l/min**  
**celelalte scheme : Dn10 ....200l/min , Dn20 ... 400l/min ,**  
**Dn32 ..... 600l/min**

**Fluid :**  
**Tipul fluidului : ulei mineral aditivat .**  
**Domeniul de vascozitate : 10 ...800cSt**  
**Domeniul de temperatura : -20°C.....+80°C**  
**Filtrare: 25 ..30 um**

## ELECTRICE

Tipul curentului :                      curent continuu(cc)                      curent alternativ (ca)  
Tensiune :                                      24V                                      220V/50Hz

Abaterea admisa a tensiunii :              +10%  
Durata relativa de actionare :              Da100%  
Numar maxim de comutari pe ora :      3600  
Putere absorbita la 20 °C :

la anclansare :	35 W	120VA
la mentinere :	35 W	40 VA

Racordare : cupla electrica tip stecker , conform ISO 4400

Protectie : IP65 ; conform STAS 5325 (DIN 40050)

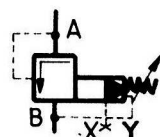
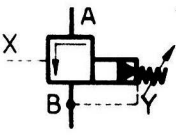
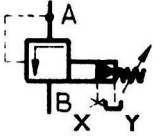
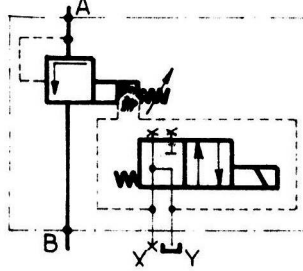
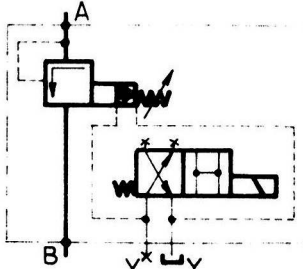
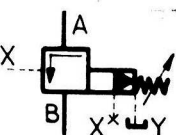
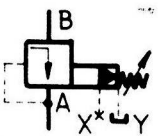
Timp de raspuns al distribuitorului de comanda :

la anclansare :	20... 60 ms
la dezanclansare :	10 ... 60ms

Presiune :max 160 bar

Scheme functionale

Tabel 1

Cod	Simbol	Denumire
04		Supapa de siguranta
05		Supapa de deconectare
06		Supapa de succesiune
06 ED		Supapa de succesiune (siguranta) cu cuplare electrica (ventil cu comanda electrica, normal deschis)
06 EI		Supapa de succesiune (siguranta) cu cuplare electrica (ventil cu comanda electrica, normal inchis)
07		Supapa de conectare
16		Supapa de reductie (normal deschisa)

# CURBE CARACTERISTICE

1. Schemele 04, 06, 06 ED si EL

1.1 Caracteristica

presiune debit :  $P_r = f(Q)$

1.2 Debitul de pilotare in functie de

debitul deversat  $Q_p = f(Q)$

Dn10

$\nu = 35 \text{ cSt}$

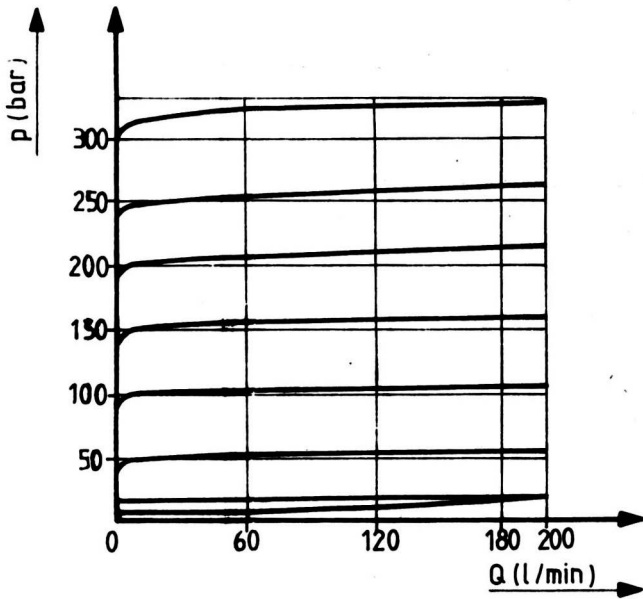


Fig. 1

$\nu = 35 \text{ cSt}$

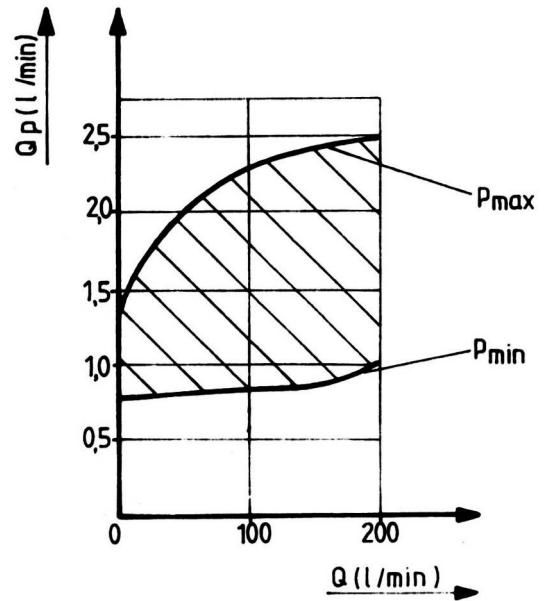


Fig. 2

Dn20

$\nu = 35 \text{ cSt}$

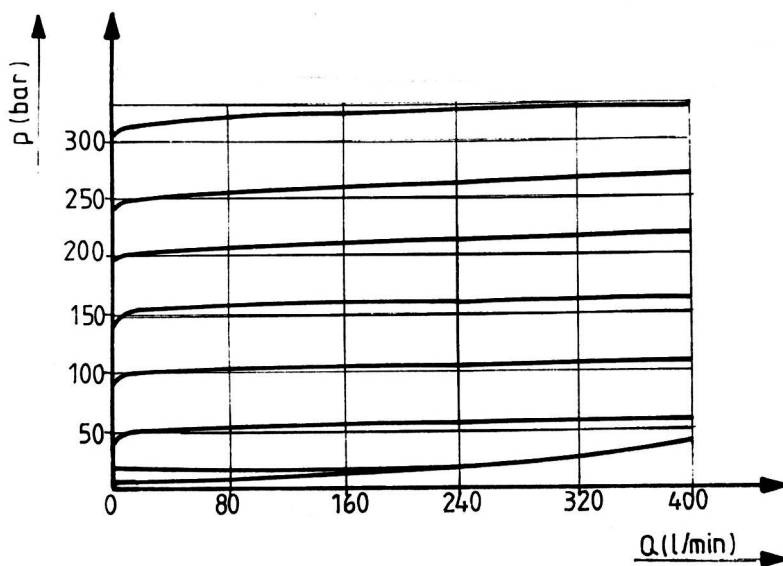


Fig. 3

$\nu = 35 \text{ cSt}$

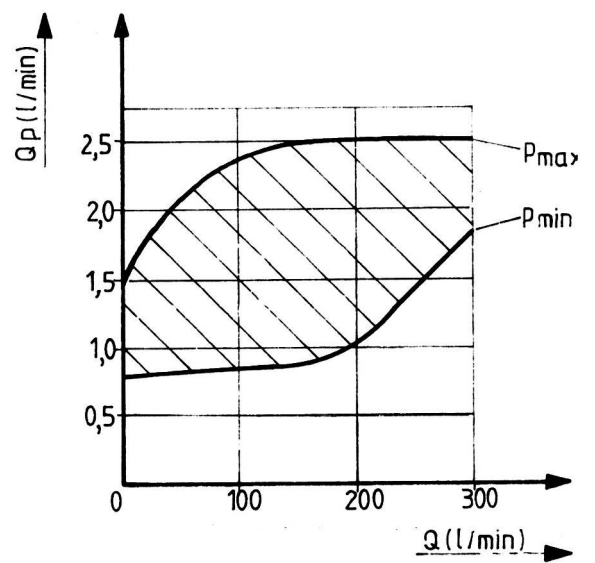


Fig. 4

# Dn32

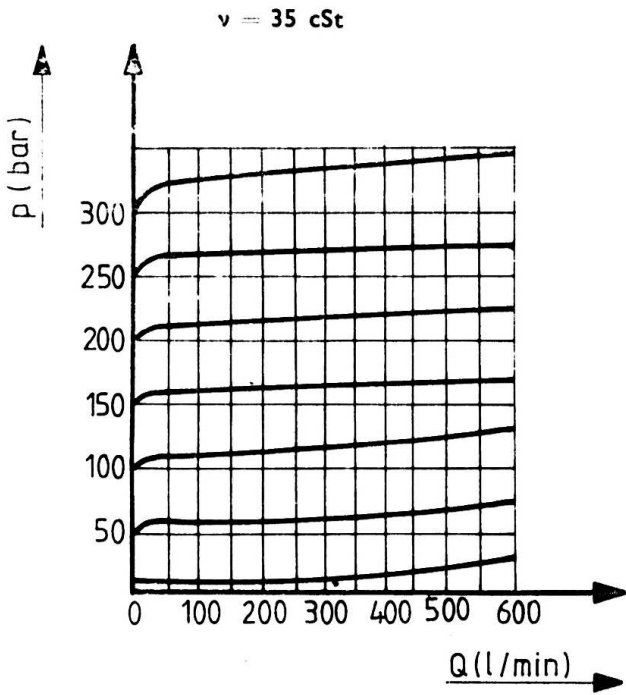


Fig. 5

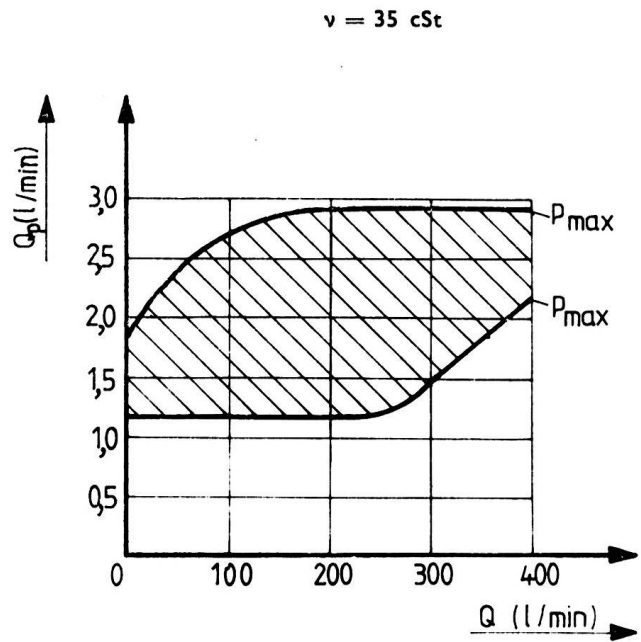


Fig. 6

## 2.Schema 16

### Caracteristica presiune-debit $P_r=f(Q)$

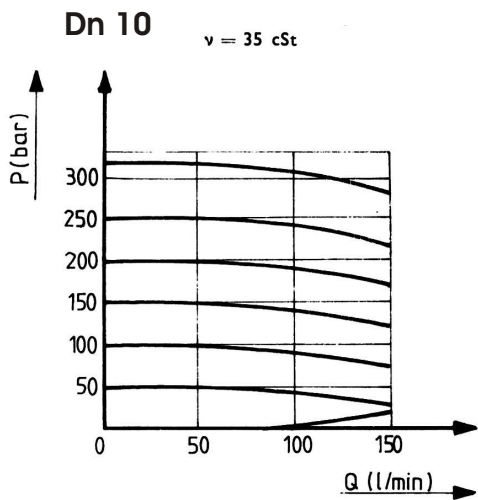


Fig. 7

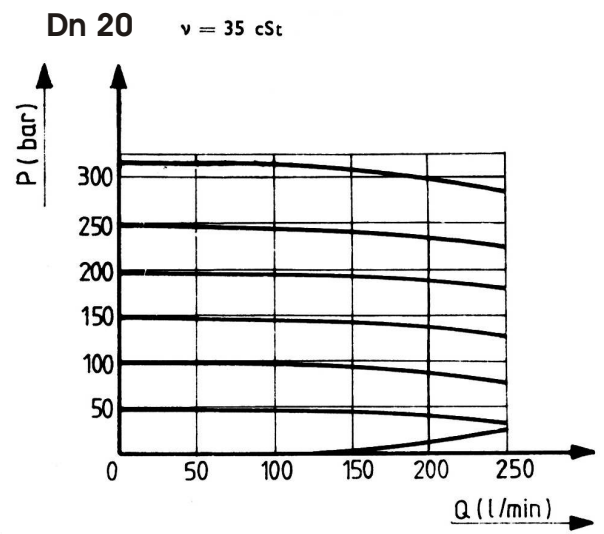


Fig. 8

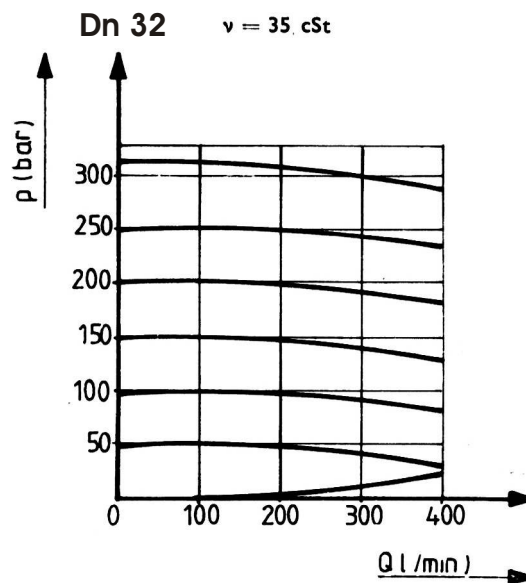


Fig. 9

## DIMENSIUNI

### Supape de presiune

Schemele 04 ,05, 06, 07 si 16 dimensiuni de montaj pe placa conform ISO 5781

**Dn10**

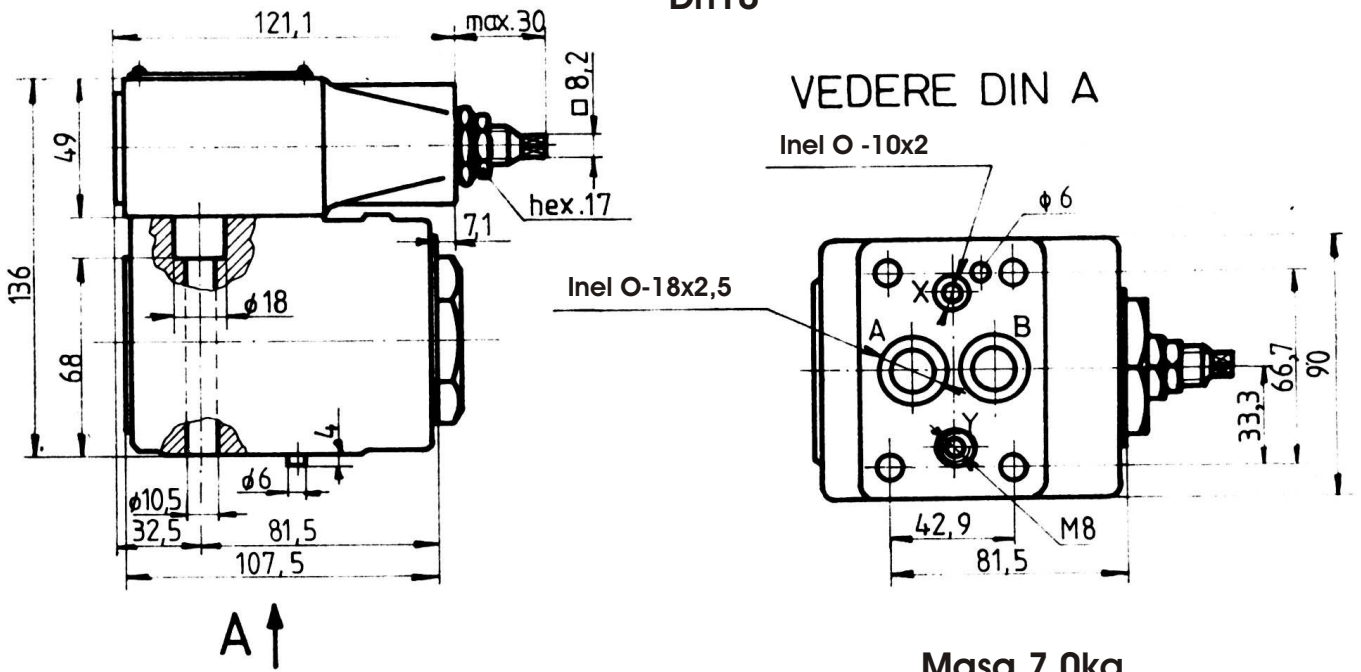


Fig. 10

**Dn20**

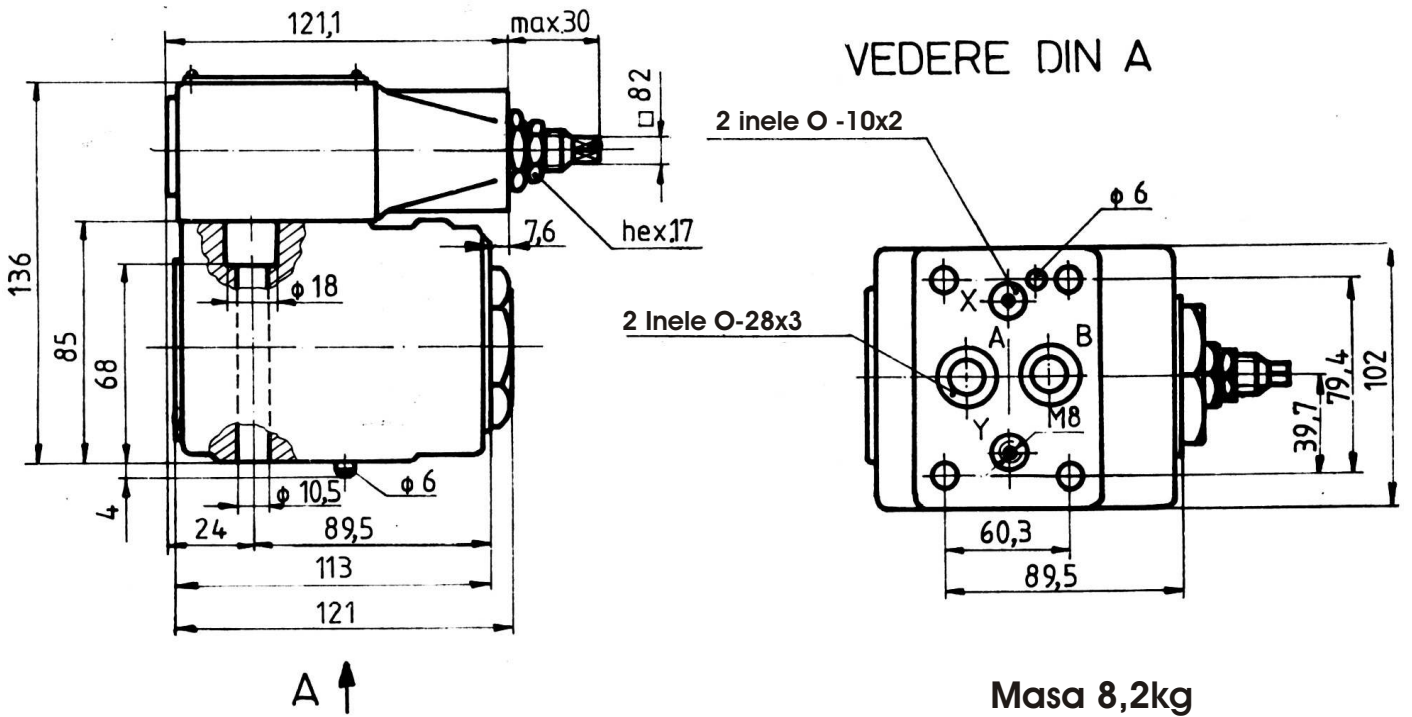
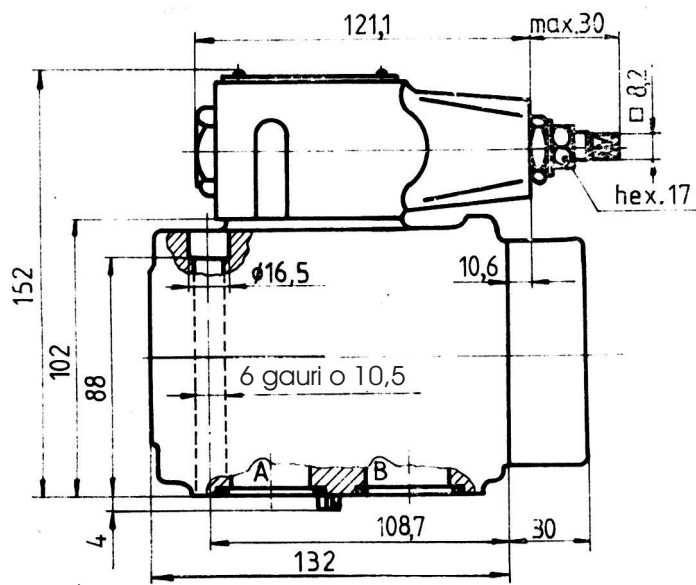
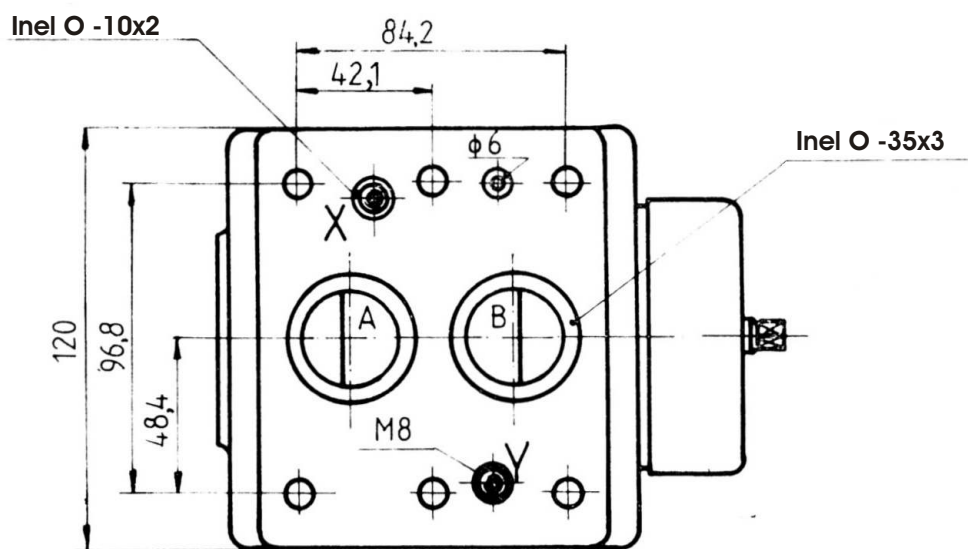


Fig. 11

## Dn32

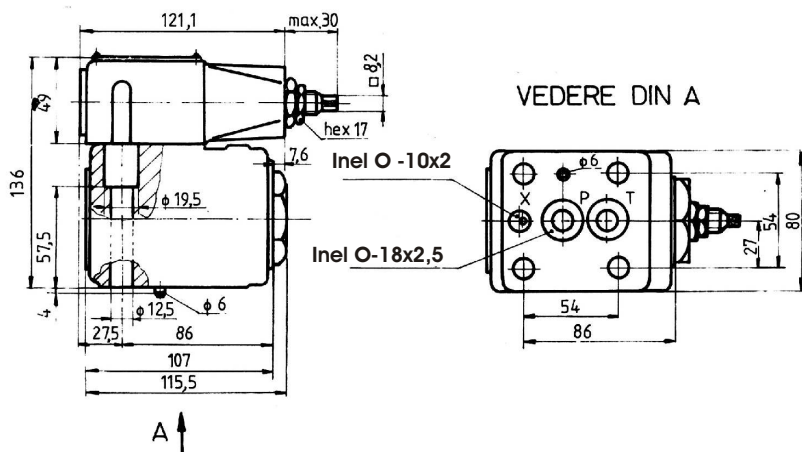


**Masa 13,1 kg**

Fig. 12

**Schemele 04 si 06 , dimensiuni de montaj conform ISO 6264**

## Dn10



**Masa 6,8 kg**

Fig. 13



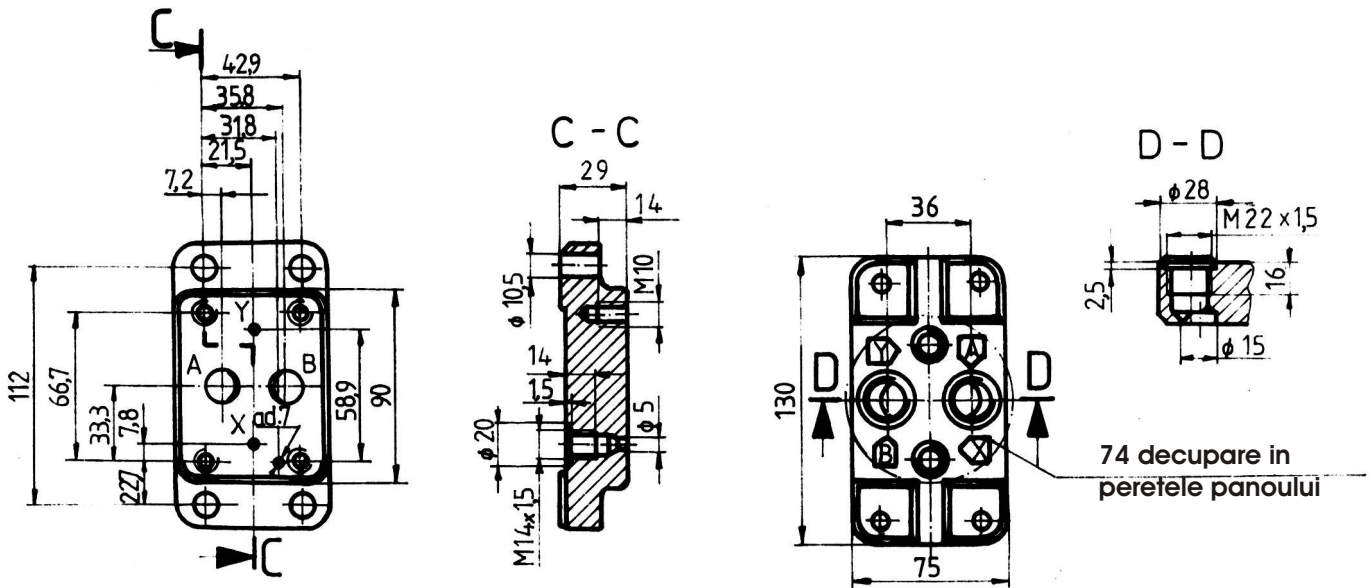




# PLACI DE BAZA

## Placa de baza cu dimensiuni conform ISO 5781

Dn10



Dn20

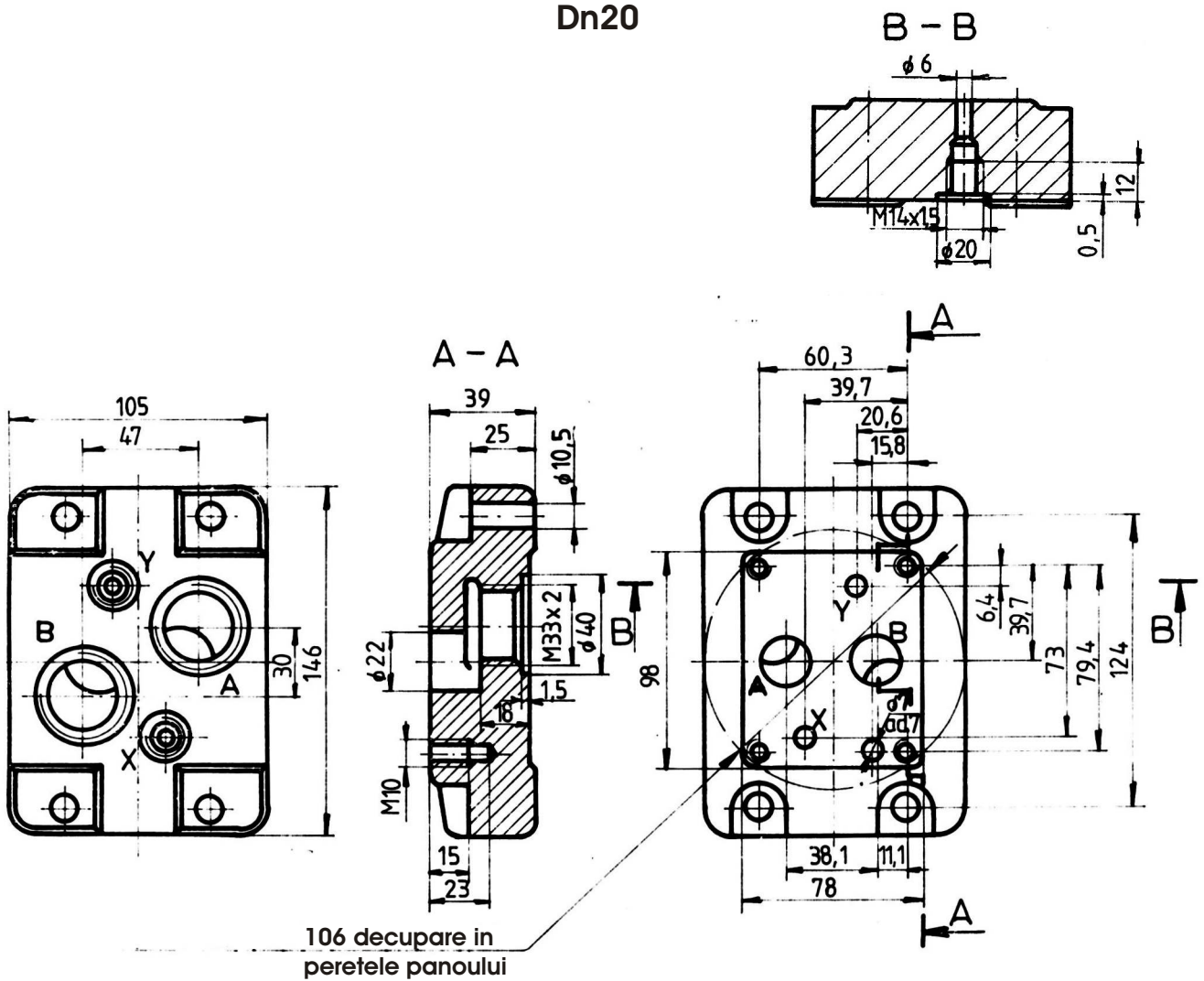


Fig 20

Dn32

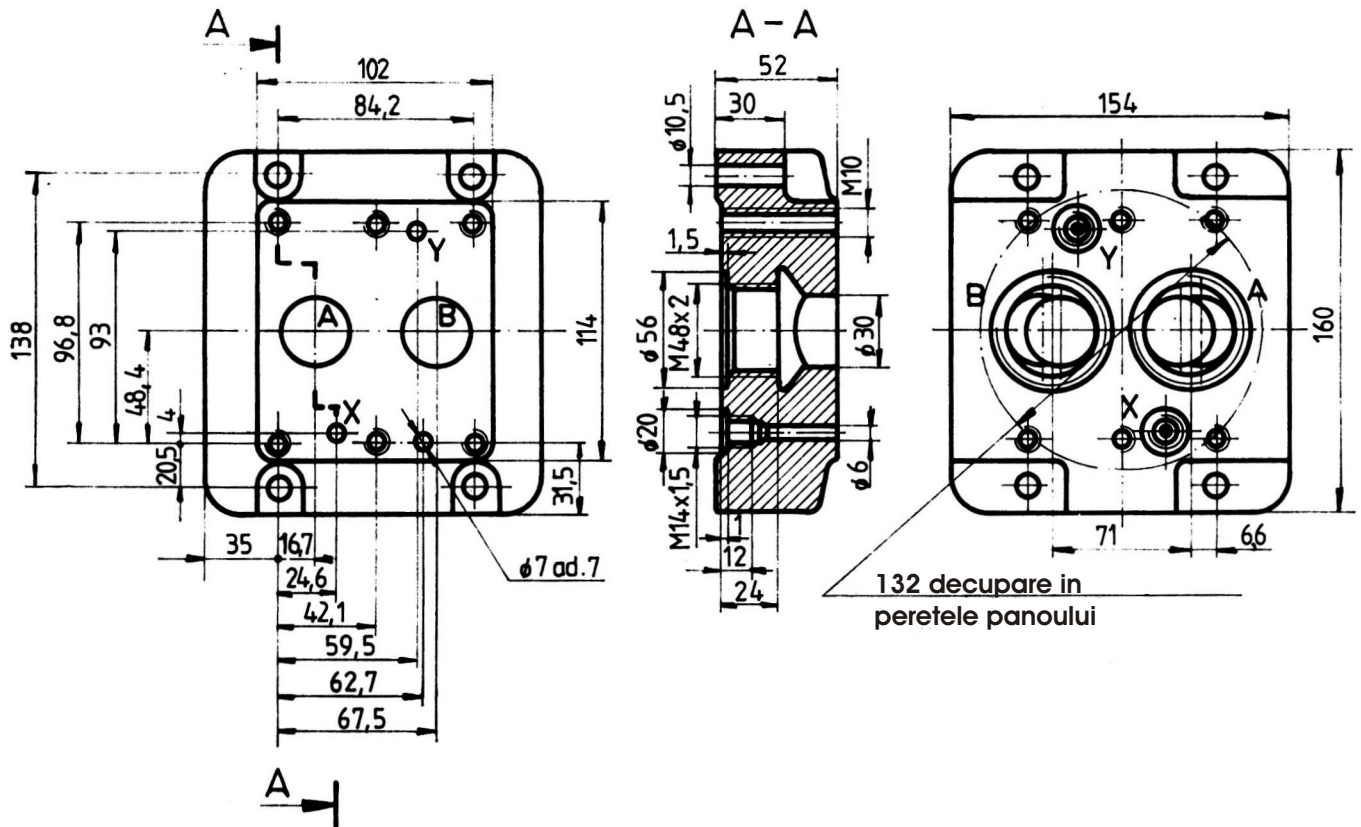


Fig. 21

PLACI DE BAZA CU DIMENSIUNI DE MONTAJ CONFORM ISO 6264

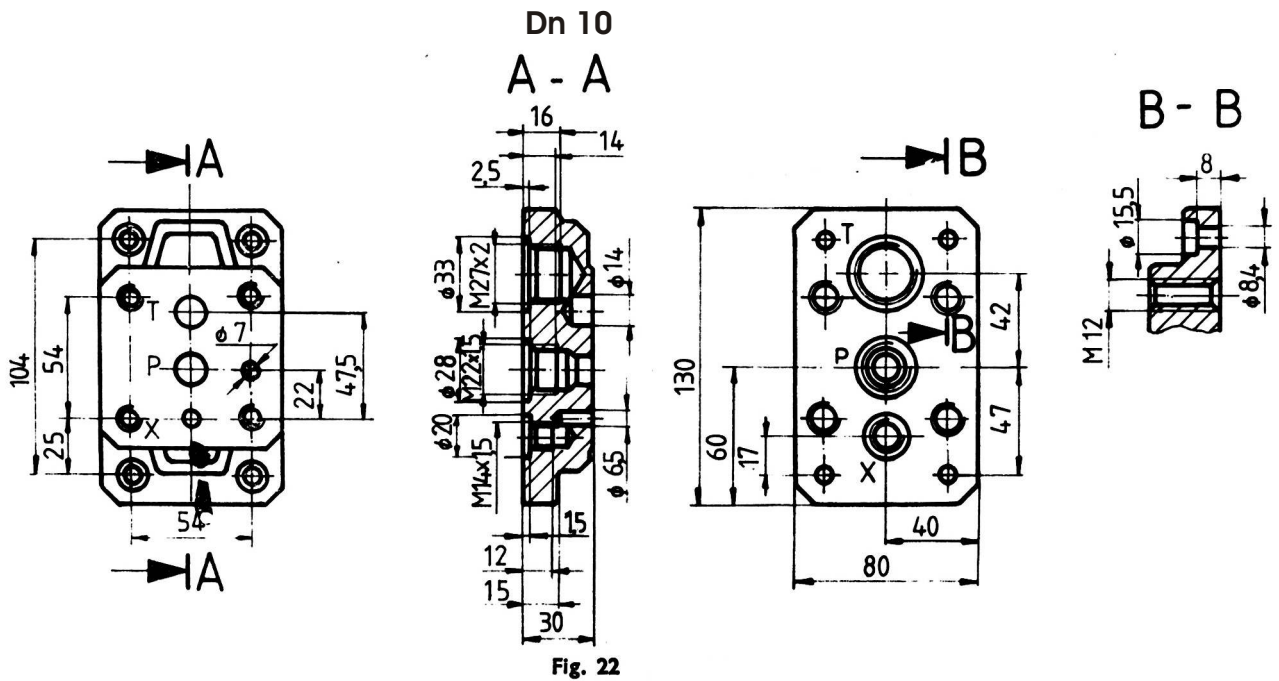


Fig. 22

Dn 20

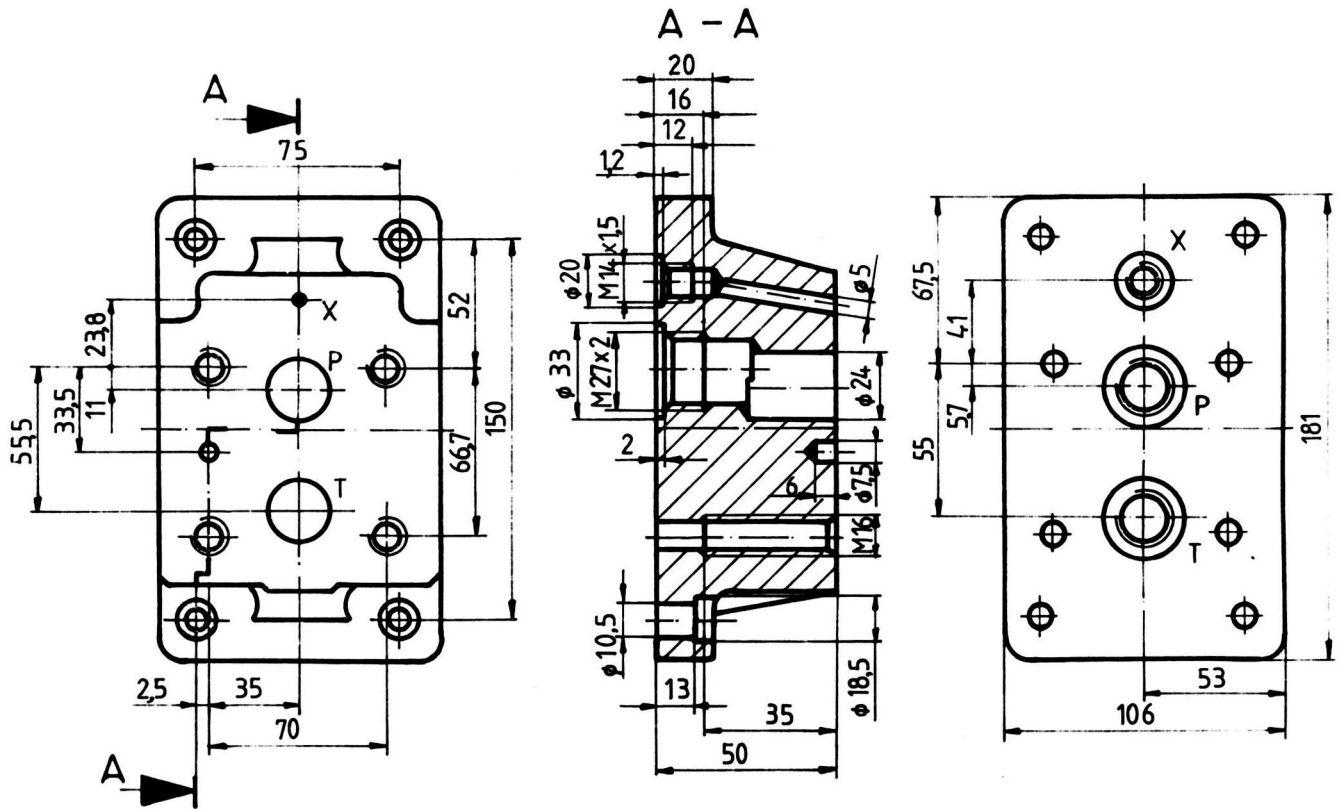


Fig. 23

Dn 32

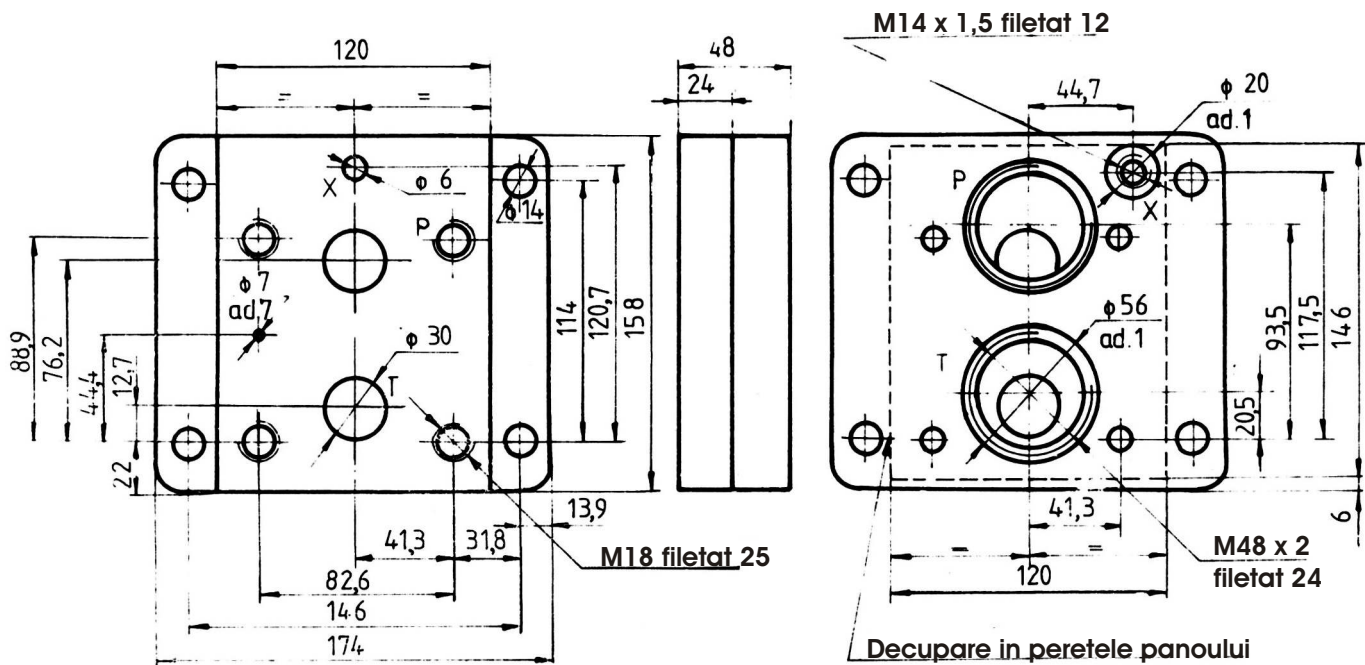


Fig. 24

Dn	Cod de comandă	ISO	Șuruburi de fixare	Moment de strângere daNm	Masa Kg
10	PBS 10-1	5781	M 10×80 STAS 5144-80 gr. 10.9	5+1,3	1,300
	PBS 10-2	6264	M 12×75 STAS 5144-80 gr. 10.9	9+3	1,500
20	PBS 20-1	5781	M 10×80 STAS 5144-80 gr. 10.9	5+1,3	3,400
	PBS 20-2	6264	M 16×75 STAS 5144-80 gr. 10.9	24+5	4,800
32	PBS 32-1	5781	M 10×100 STAS 5144-80 gr. 10.9	5+1,3	5,0
	PBS 32-2	6264	M 18×115 STAS 5144-80 gr. 10.9	40+8	6,0

## INDICATII DE MONTAJ

Supapele se pot monta pe placi de baza proprii sau pe alte placi si blocuri cu circuite hidraulice. In cazul montarii supapei pe alte placi decat cea de baza se vor respecta conditiile impuse de ISO 5781 (STAS 12440/2-86), respectiv ISO 6264 (STAS 12440/3-86)

## COD DE COMANDA

**1 2 3 4 5 - 6 7 8 - 9\*/10\* - 11\*\***

\* Numai pentru schemele 06 ED si 06 EL

\*\* Pentru varianta climatizata se adauga la sfarsitul codului /T1 sau T2

1. S-Supapa de presiune
2. P-Comanda pilotata
3. Montaj pe placa:
  - P - oglinda conf. ISO 5781 (toate schemele)
  - 1P - oglinda conf. ISO 6264 (numai schemele 04, 06, 06 ED, 06 EL)
4. C-Tip cartus
5. Diametru nominal
  - 10, 20, 32
6. Schema functionala, conf. tabel 1
7. Domeniul de reglare:
  - 1-7 ...315 bar
  - 5-6 ...80 bar
  - 2-6 ...160 bar
- 8.Element de reglare
  - M-roata de mana
  - G-cap gradat fara asigurare
  - S-cu surub
- 9/10. Tensiunea electromagnetilor:
  - 024/00-24 V.c.c.
  - 220/50-220 V.c.a.
11. O-Seria de fabricatie