

HIDROSIB

S.A.



2400 Sibiu str.Stefan Cel Mare 193 -Romania

40 ...800 l/min

315 bar

Supape de sens unic DN 10 ... 32

FC - 13

GENERALITATI

Supape de sens unic pentru montaj incorporat (cartus).
Inchidere etansa in sensul B -> A, prin supapa conica pe scaun circular.

Raportul suprafetelor:

$$A_A / A_X = 1 / 1,6; A_B = 0,6 A_A$$

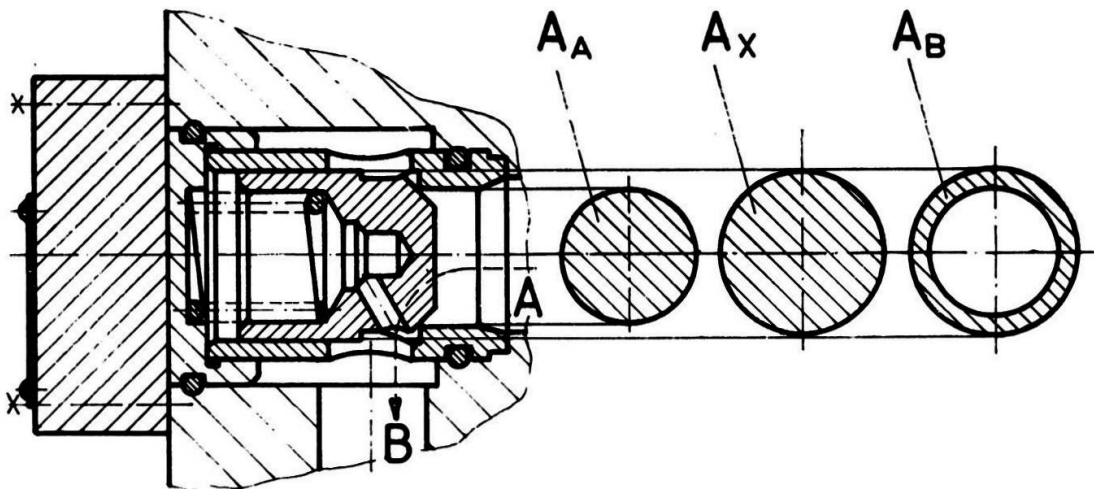


Fig. 1

CARACTERISTICI TEHNICE

GENERALE

Pozitia de montaj : indiferenta

Sensul curentului de fluid:

1

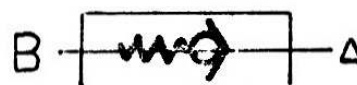
A->B liber

B->A blocat

Temperatura mediului ambiant : -20°C.....+50°C

Racordare : Prin inglobarea cartusului in bloc sau placa.

Schema functionala



HIDRAULICE

Presiune maxima de lucru : 315 bar

Presiunea de deschidere: 0,3 bar

Debitul nominal, la

$p = 1 \text{ bar} + \text{presiunea de deschidere}$: Dn10: 30l/min; Dn 20: 80l/min;
Dn 32: 200l/min

Fluid :

Tipul fluidului : ulei mineral aditivat .

Domeniul de viscozitate : 10 ...500 cSt

Domeniul de temperatura : $-20^{\circ}\text{C} \dots +80^{\circ}\text{C}$

Filtrare: 25...30 μm

Debit normal, la $\Delta p = 1 \text{ var} + \text{presiunea de deschidere}$:

Dn 10: 18l/min; Dn 16: 40l/min; Dn 20: 120l/min; Dn 25: 200l/min;
Dn 32: 800l/min;

Debit maxim: Dn 10: 40l/min; Dn 16: 60l/min; Dn 20: 180l/min;
Dn 25: 400l/min; Dn 32: 800l/min;

CURBE CARACTERISTICE

Pierderea de presiune in functie de debit $\Delta p = f(Q)$ la presiunea de deschidere
0,3 bar, $\nu = 35 \text{ cSt}$

Dn 10

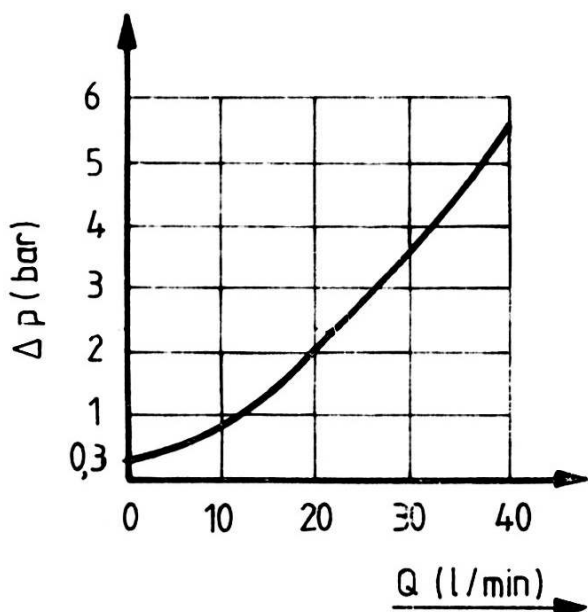


Fig 2

Dn 16

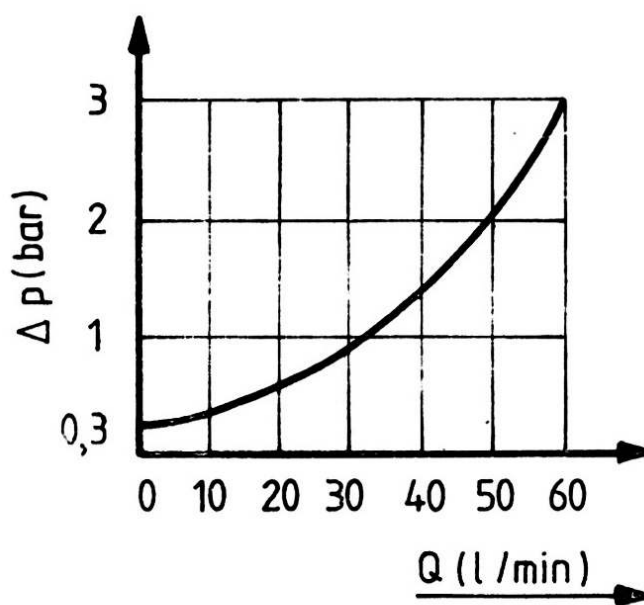


Fig. 3

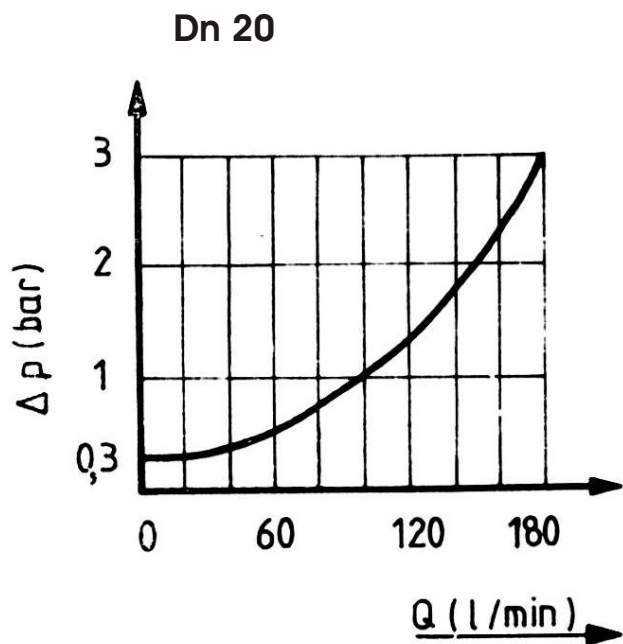


Fig. 4

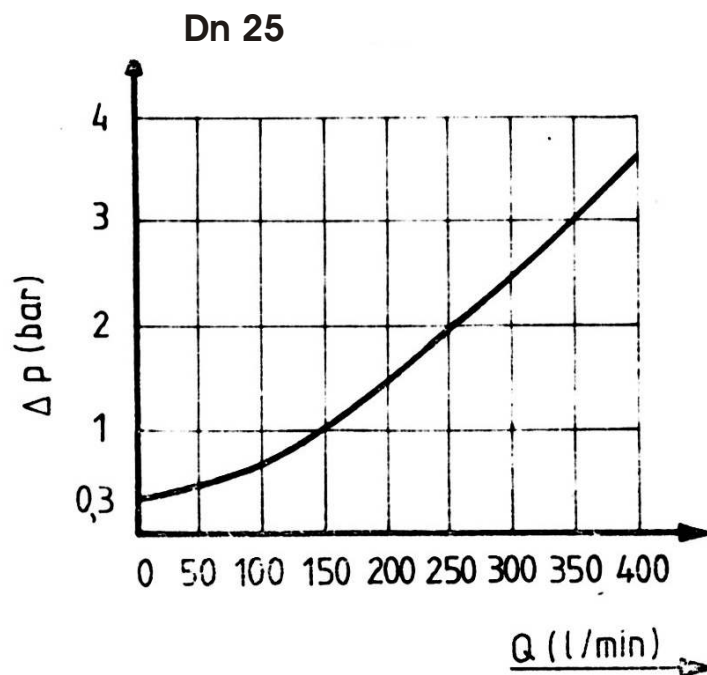


Fig. 5

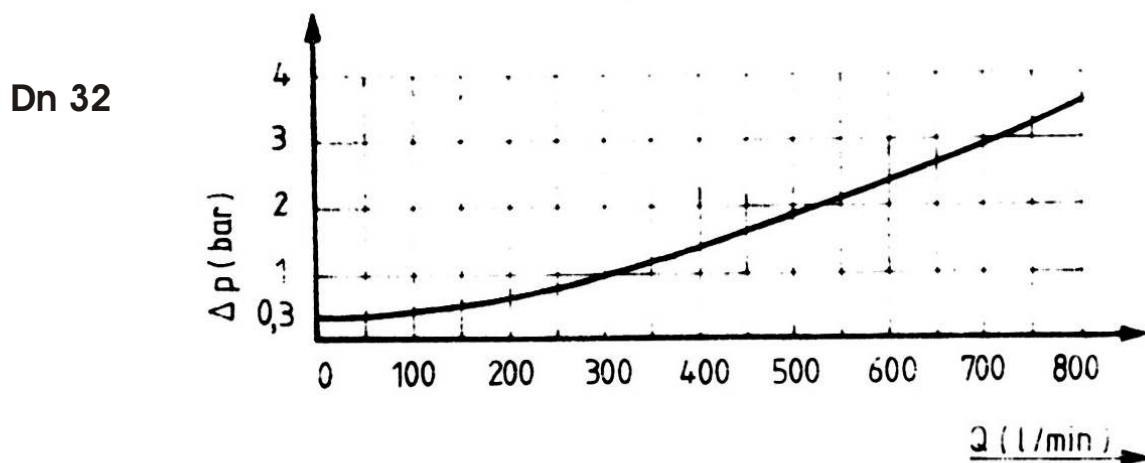


Fig. 6

DIMENSIUNI

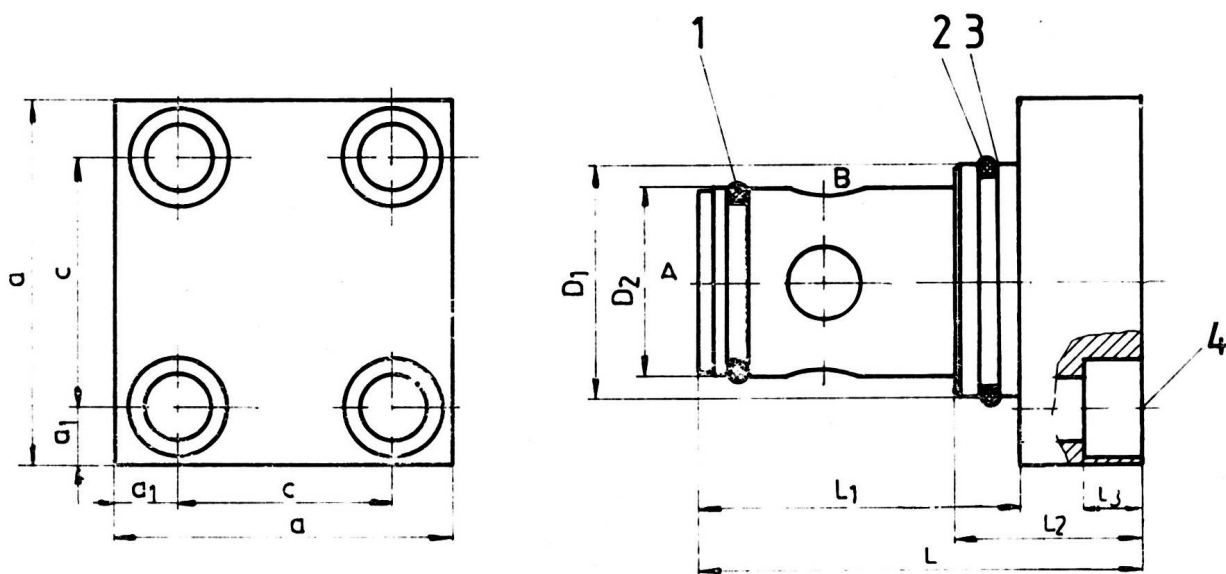


Fig. 7

Poz.	Denumirea	Buc./ans	Dimensiunea				
			10	16	20	25	32
1.	Inel O	1	15×2,5	20×2,5	28×3	39,5×3	49,5×3
2.	Inel O	1	22×2,5	26,5×3	39,5×3	54,5×3	64,3×5,7
3.	Inel de reazem	1	—	32×2,3/1	45×2,3/1	60×2,3/1	75×4,6/1,5
4.	Șurub STAS 5144-80 gr. 10.9	4	M 6×20	M 8×30	M 12×35	M 16×50	M 20×60
Moment de strângere (daN.m)			1,1+0,3	2,6+0,8	9+3	24+5	45+11

Dimensiunea nominală (Dn)	Cote (mm)									Masa (kg)
	a	a ₁	C±0,2	D ₁ (e 9)	D ₂ (g 6)	L	L ₁	L ₂	L ₃	
10	45	8	29	27	20	54	38	31	6,5	0,370
16	65	9,5	46	32	25	78	56	46	9	0,900
20	85	13,5	58	45	34	102	72	61	13	2,200
25	102	16	70	60	45	125	85	77	17,5	4,200
32	125	20	85	75	55	155	105	93,5	21,5	7,800

MONTAJ

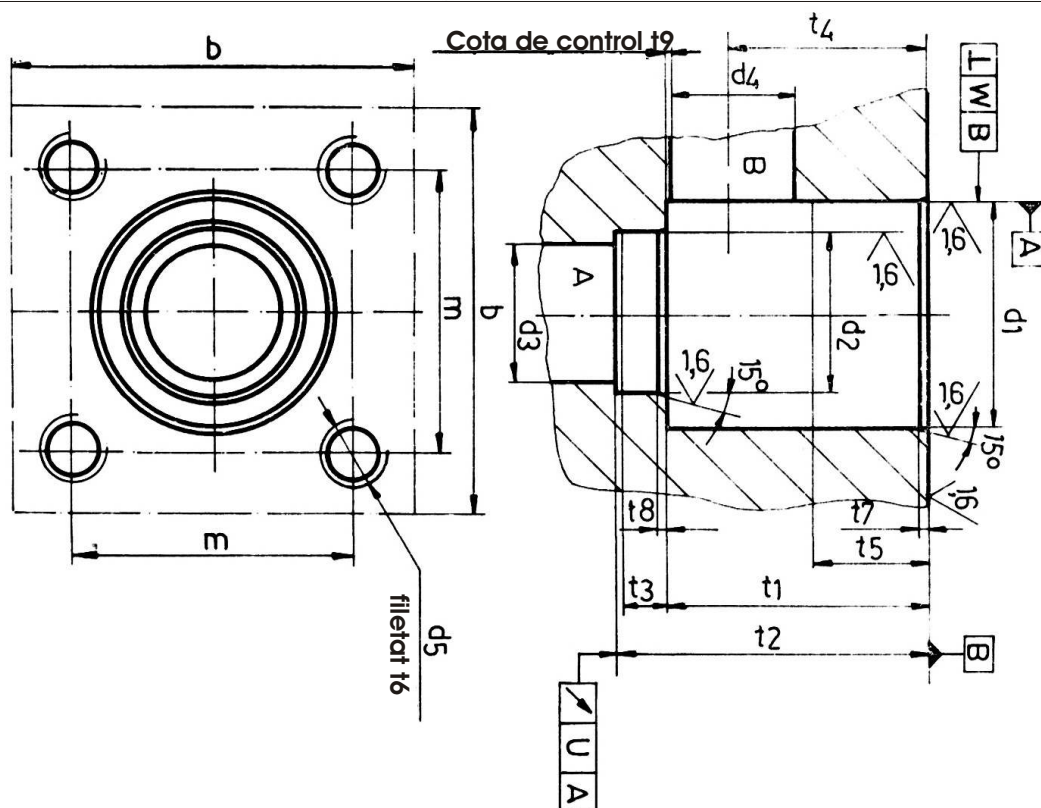


Fig. 8

Dimensiunea nominală (Dn)		Cote (mm)																	
U	W	b	d ₁ (H7)	d ₂ (H7)	d ₃	d ₄ max.	d ₅	m±0,2	t ₁ +0,1	t ₂ +0,1	1 ₃	t ₄	t ₅	t ₆	t ₇	t ₈	t ₉		
10	0,03	0,05	45	27	20	10	12	M 6	29	29	38	7,5	22,5	16	15	1,5	1,5	0,5	
16	0,03	0,05	65	32	25	16	16	M 8	46	43	56	11	34	20	20	2	2	0,5	
20	0,03	0,05	85	45	34	25	25	M 12	58	58	72	12	44	30	25	2,5	2,5	1	
25	0,03	0,1	102	60	45	32	32	M 16	70	70	85	13	52	30	35	2,5	2,5	1,5	
32	0,05	0,1	125	75	55	40	40	M 20	85	87	105	15	64	30	40	3	3	3	

INDICATII DE MONTAJ

-Supapele se monteaza prin introducerea cartusului in placi sau blocuri cu circuite hidraulice care vor respecta dimensiunile si conditiile de prelucrare aratate in fig. 8 si tabelul 3.

-Suruburile livrate impreuna cu supapa se vor strange la momentele indicate la paragraful

COD DE COMANDA

1 2 3 - 4 - 5/*

*Pentru varianta climatizata se adauga la sfarsitul codului /T1 sau T2

1. SU-Supape de sens unic
2. K-Montaj cartus
3. Diametru nominal 10, 16, 20, 25, 32
4. Presiunea de deschidere 1 pentru 0,3 bar
5. O-Seria de fabricatie.