

HIDROSIB

S.A.



2400 Sibiu str.Stefan Cel Mare 193 -Romania

400 l/min

Max 315 bar

Droșele Dn6 ... 32

Fc - 16

GENERALITATI

Montaj de traseu
Cu sau fara supapa de ocolire integrata :
Reglaj manual

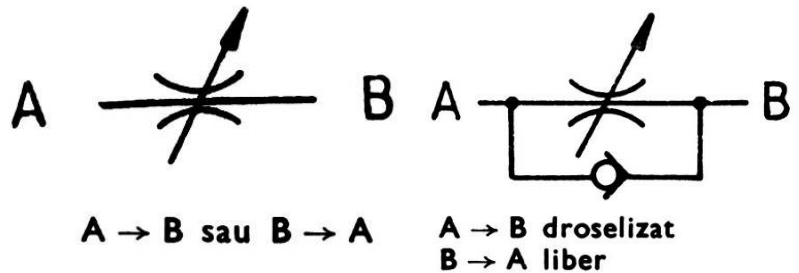
CARACTERISTICI TEHNICE

GENERALE

Pozitia de montaj : indiferenta

Schema functionala

sensul de curgere
al fluidului



Temperatura mediului ambiant : -20°C.....+50°C

HIDRAULICE

Presiune nominala : 315 bar

Debit nominal , $V_{lei}=6m/s$

6 10 16 20 25 32

10 l/min , 30 l/min, 65 l/min , 115l/min, 175 l/min, 250l/min

Debit maxim : conf Fig1 ...5

Presiune de deschidere a supapei de ocolire :0,5 bar

Fluid :

Tipul fluidului : ulei mineral aditivat .

Domeniul de vascozitate : 10 ...400mm²/s

Filtrare: ≤ 25 um

CURBE CARACTERISTICE

Caderea de presiune in functie de debit $\Delta p_{A-B} = f(Q)$

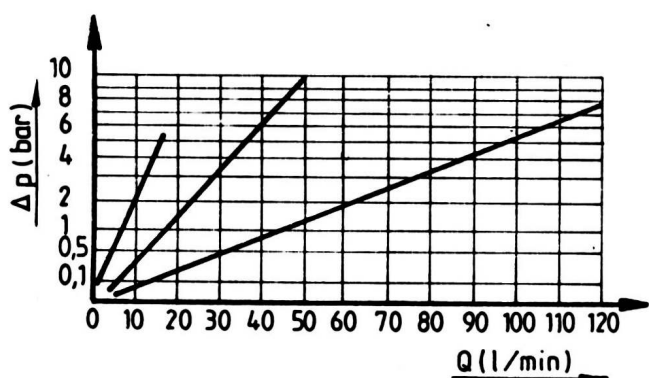


Fig. 1

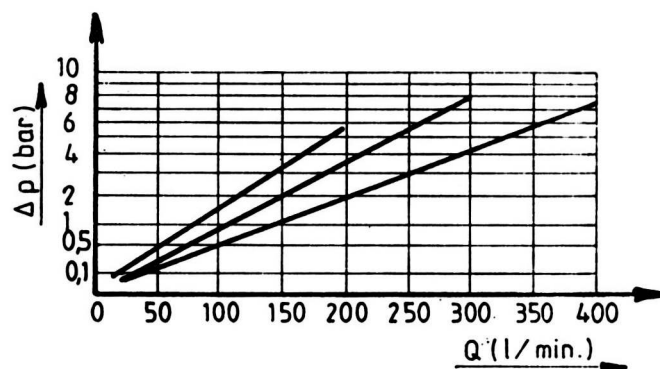


Fig. 2

Caderea de presiune prin supapa de ocolire in functie de debit : $PB-A=f(Q)$

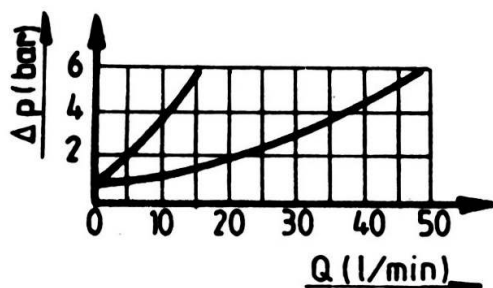


Fig. 3

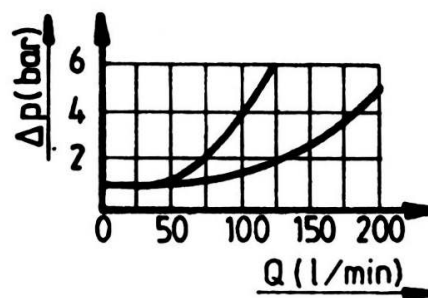


Fig. 4

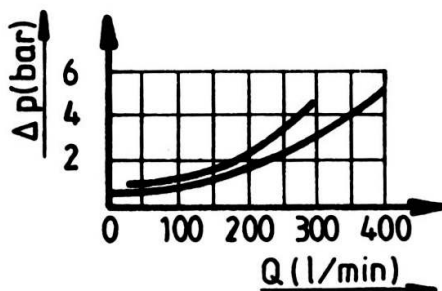


Fig. 5

DIMENSIUNI

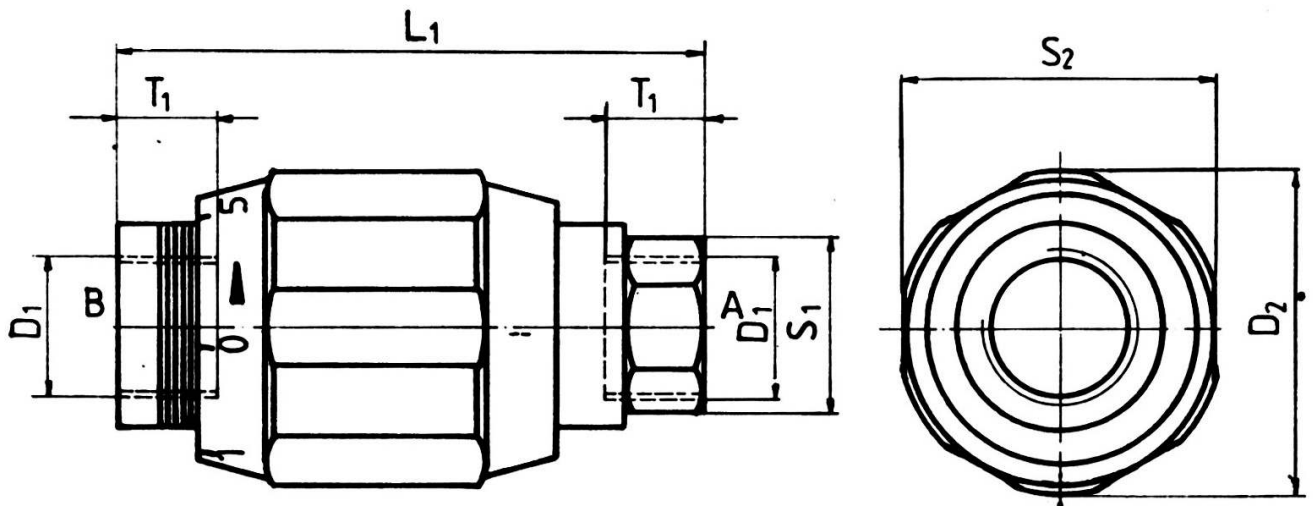


Fig. 6

Dn	D ₁	D ₂	L ₁	S ₁	S ₂	T ₁	Masa (kg)
6	M14 x 1,5	34	65	22	32	12	0,300
10	M22 x 1,5	48	80	30	46	14	0,700
16	M27 x 2	58	100	41	55	17	1,200
20	M33 x 2	75	110	41	70	18	2,300
25	M42 x 2	85	130	55	75	20	3,500
32	M48 x 2	94	150	60	80	25	4,600

Cod de comanda

1 2 3 4-5-6

- 1.DR -Drosel
- 2.Supapa de ocolire incorporate
 - 1 - cu supapa de ocolire
 - 2 - fara supapa de ocolire
- 3.T - Montaj de traseu
- 4.Diametru nominal 6/10/16/20/25/32
- 5.Reglaj manual cu cheie fixa
- 6.0-Seria de fabricatie