

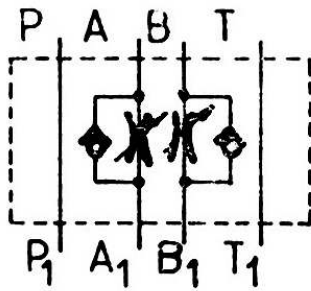
HIDROSIB
S.A.



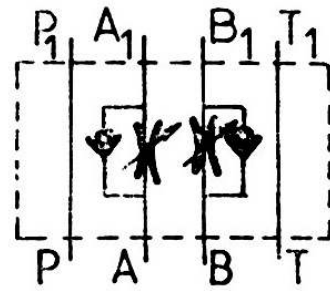
2400 Sibiu str.Stefan Cel Mare 193 -Romania

SCHEMA FUNCTIONALA

Droselizare la iesire (DR 1 M 16, 20)



Droselizare la intrare (DR 1 M 10)



Observatie: La droselul DR 1 M 10 H-0, schema "b" deriva din schema "a", rotind aparatul cu 180° in jurul axei x-x (vezi fig. 8)

CURBE CARACTERISTICE

Debitul in functie de cursa de reglare a droselului, $Q=f(s)$

Dn 10

$\nu = 35 \text{ cSt}$

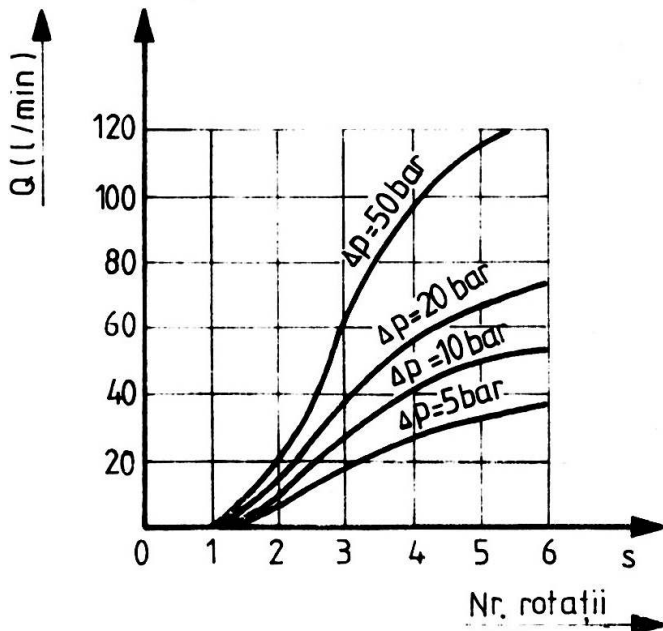


Fig. 1

Dn 16

$\nu = 35 \text{ cSt}$

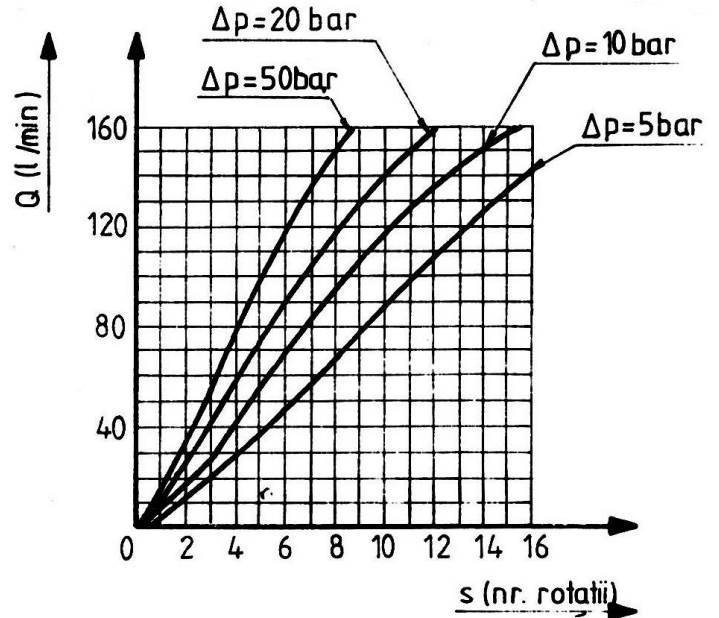


Fig. 2

Dn 20

$\nu = 35 \text{ cSt}$

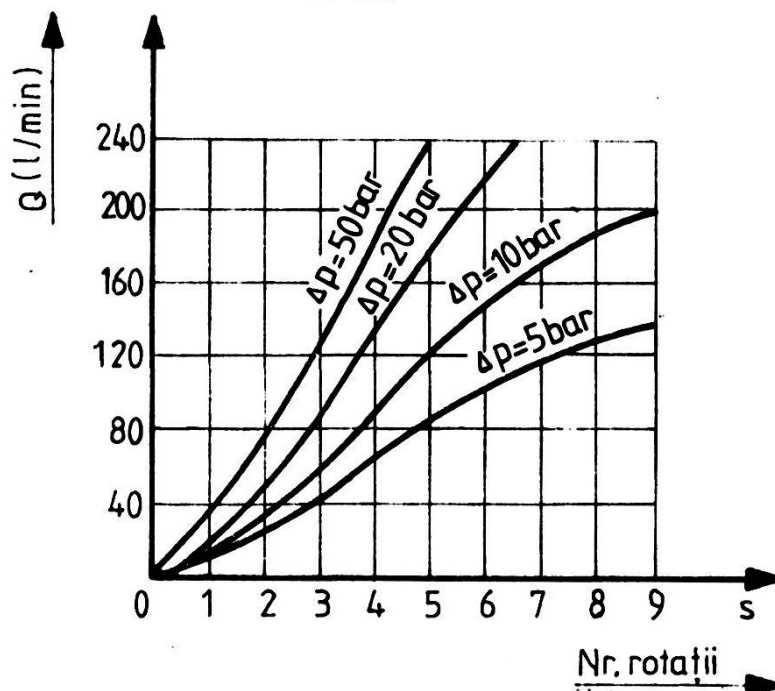


Fig. 3

Caderea de presiune prin supapa de ocolire, in functie de debit, $p = f(Q)$, la drosel complet inchis (curba 1) si complet deschis (curba 2).

Dn 10

$\nu = 35 \text{ cSt}$

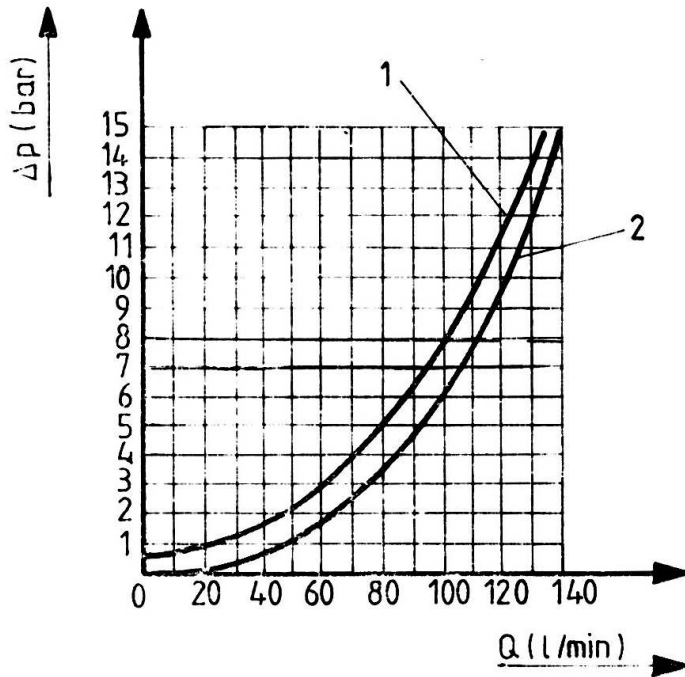


Fig. 4

Dn 20

$\nu = 35 \text{ cSt}$

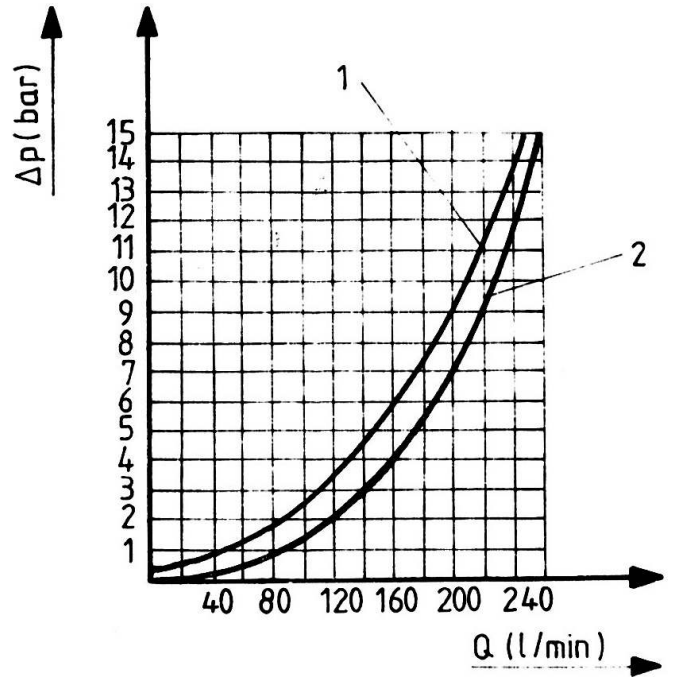


Fig. 5

Caderea de presiune in functie de debit $p = f(Q)$ la drosel complet deschis (fig. 6) si complet inchis, prin supapa de ocolire (fig. 7)

Dn 16

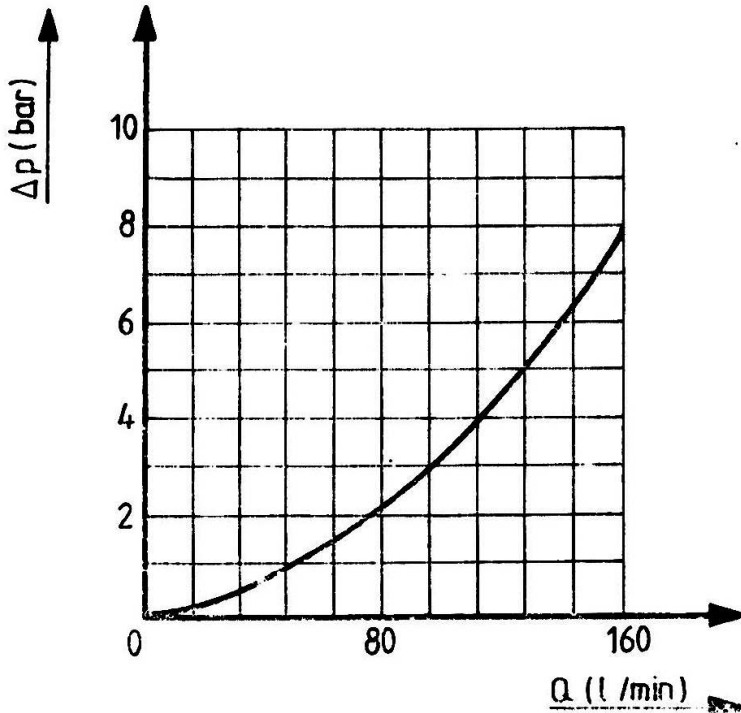


Fig. 6

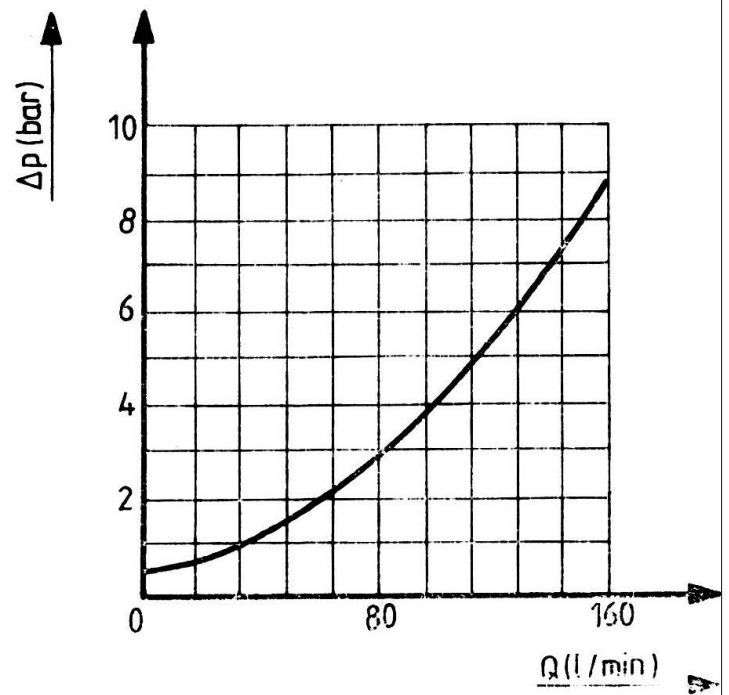


Fig. 7

Dn 16

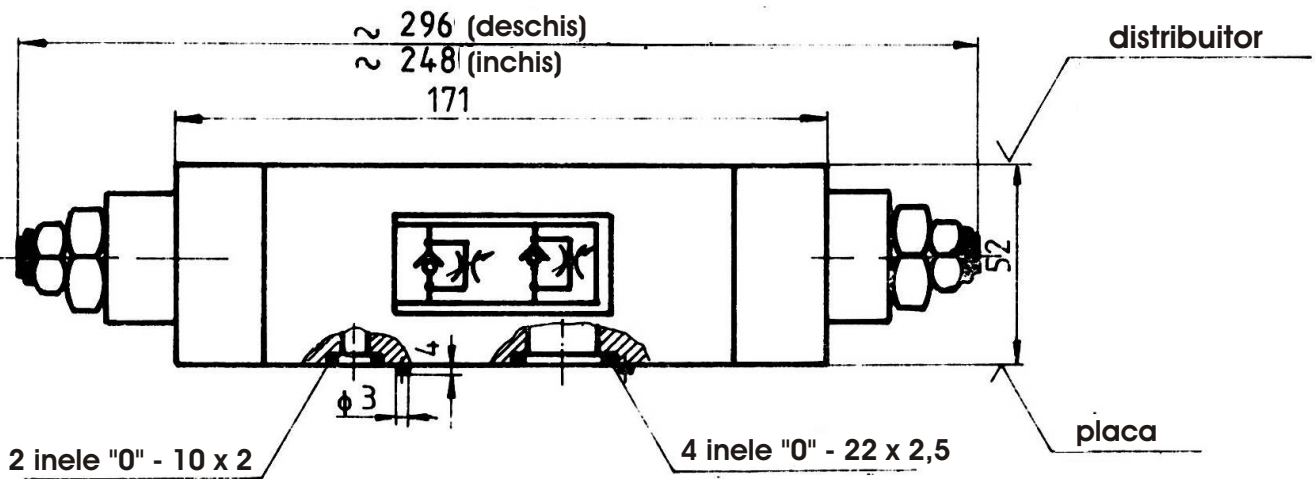
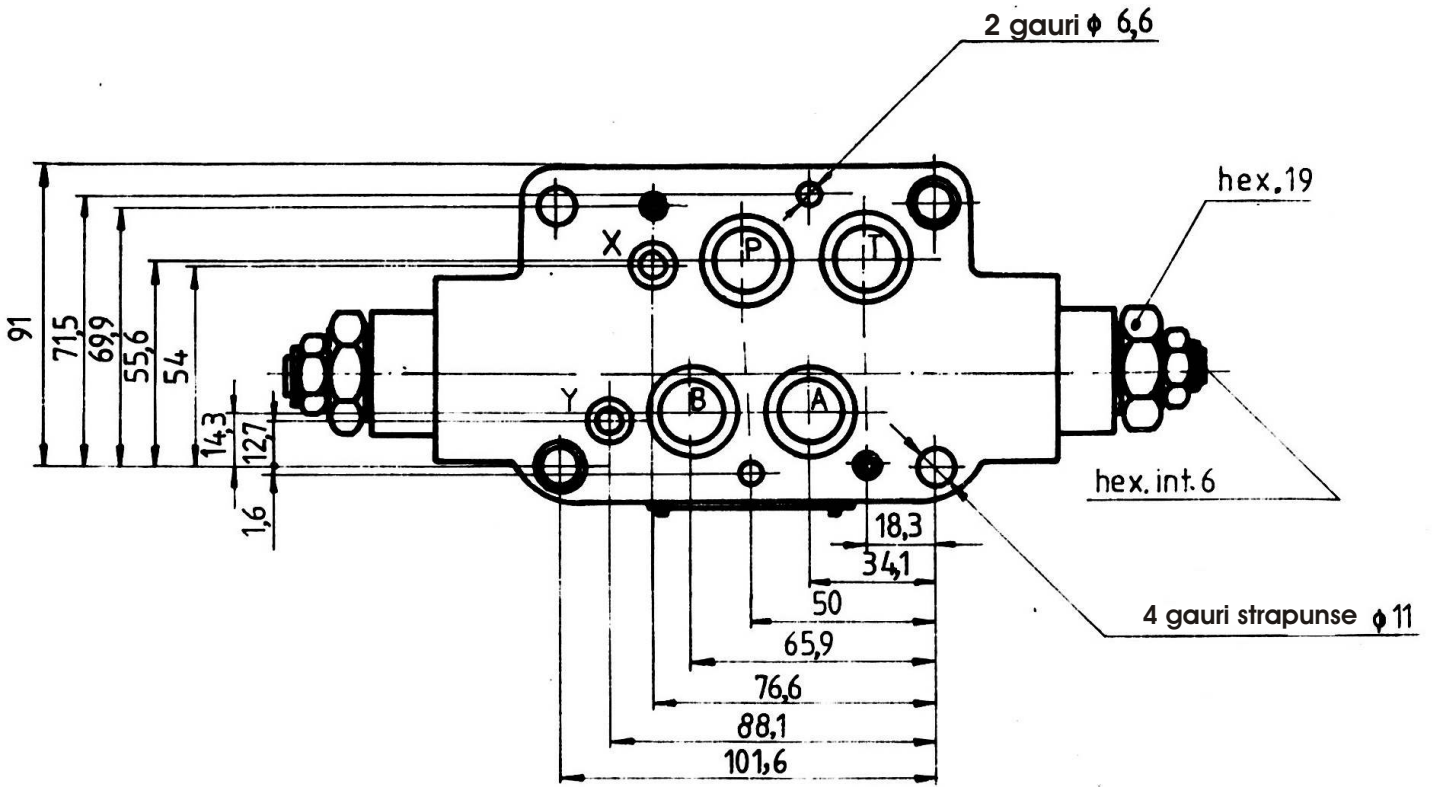


Fig. 9

Masa: 4,7 Kg.

Dn 10

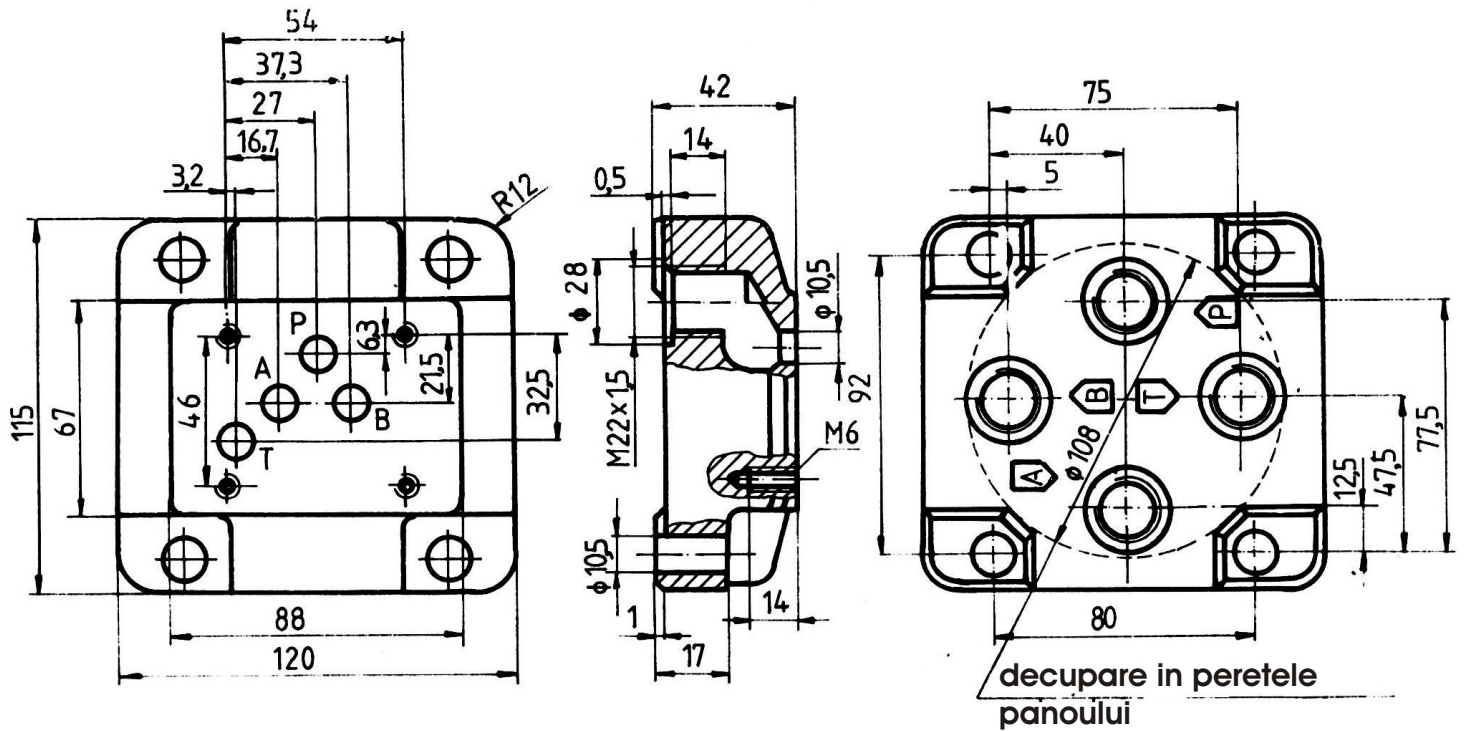


Fig. 11

Cod de comanda PBD 10-1

- 4 suruburi de fixare M6x80 STAS 5144-80 gr. 10.9 Moment de strangere: $1,1^{+0,3}$ daNm

Dn 16

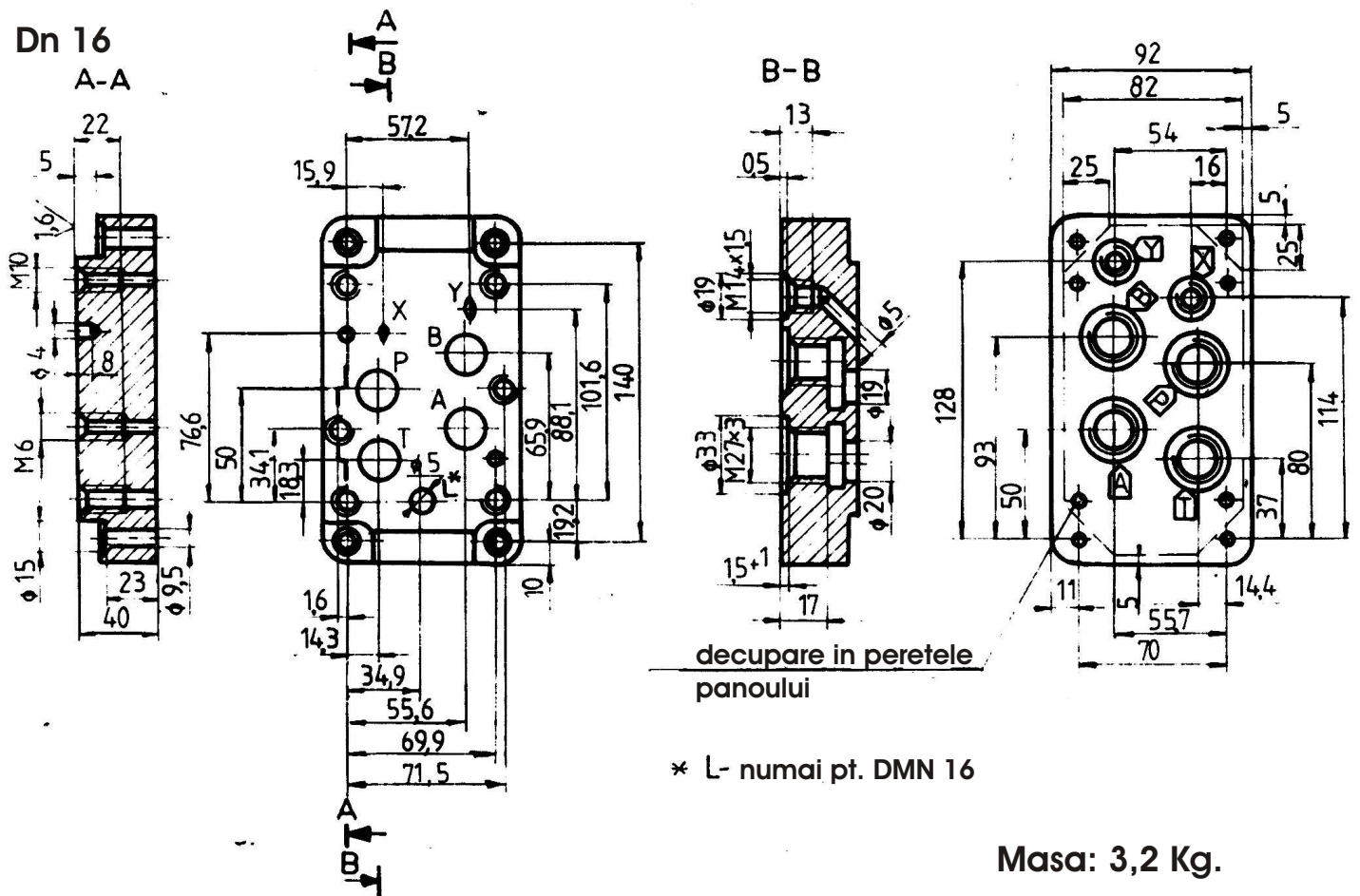


Fig. 12

Cod de comanda: PBD 16-1

- suruburi de fixare M 10x100 STAS 5144-80 gr. 10.9 Moment de strangere: 50^{+10} daNm

- suruburi de fixare M 6x100 STAS 5144-80 gr. 10.9 Moment de strangere 11^{+3} daNm

Masa: 3,2 Kg.

Dn 20

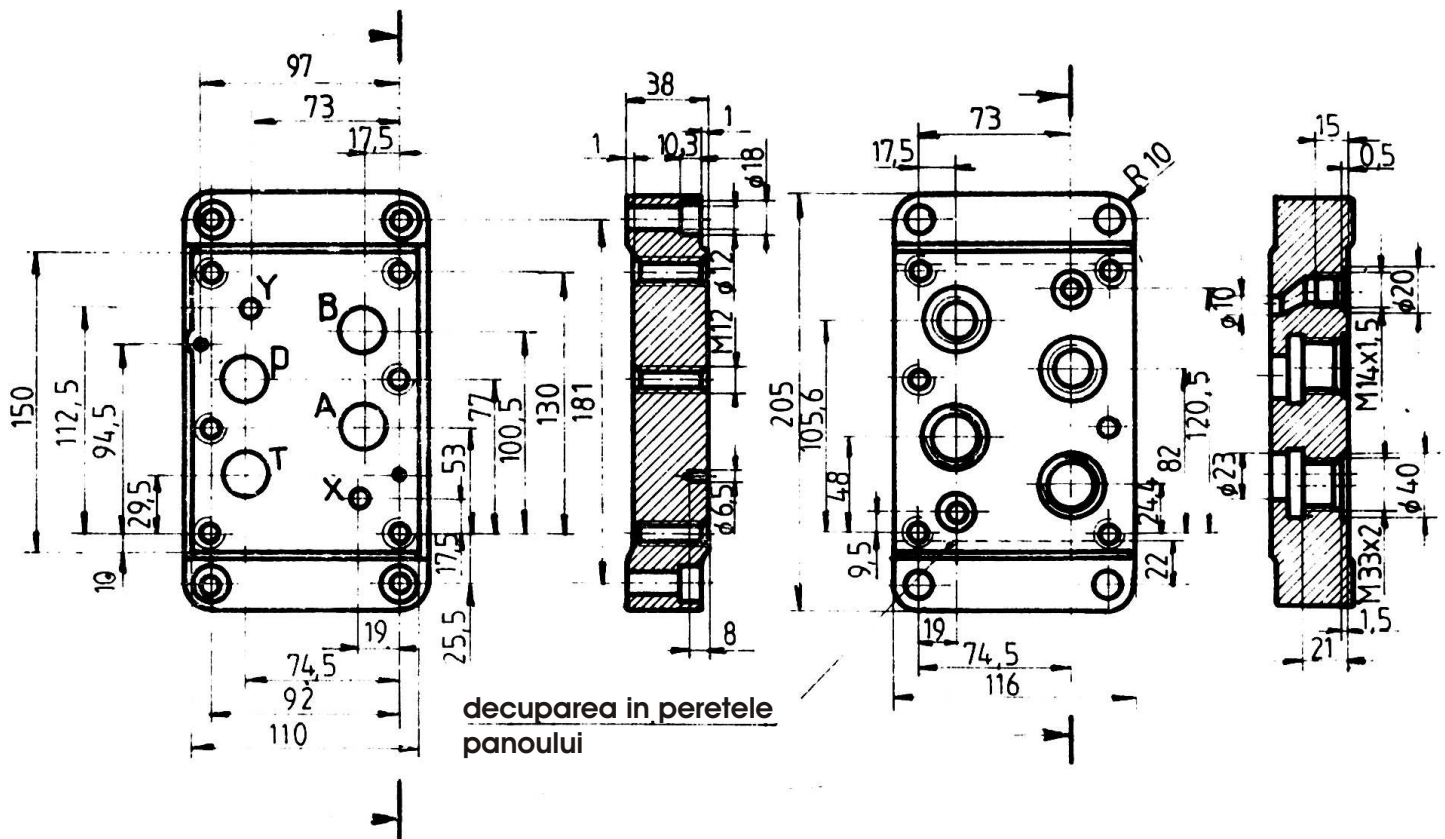


Fig. 13

Cod de comanda: PBD 20-1

Masa: 5,100 Kg.

-6 suruburi de fixare M 12x130 STAS 5144-80 gr. 10.9 Moment de strangere: 9+3 daNm

COD DE COMANDA

1 2 3 4 - 5 - 6/*

* Pentru varianta climatizata, se adauga la sfarsitul codului /T1 sau T2

- 1. DR - rezistenta hidraulica**
- 2. 1- droselizare intr-un singur sens (drosel de cale)**

- 3. M - montaj modular**
- 4. Diametru nominal 10, 16, 20**
- 5. H - reglaj manual cu cheie fixa**

- 6. O - Seria de fabricatie**