

# HIDROSIB

S.A.



2400 Sibiu str.Stefan Cel Mare 193 -Romania

330 l/min

315 bar

**Supape de presiune cu  
comanda directa  
Dn6, 10,20,32**

FC - 7

## GENERALITATI

Supape de presiune cu comanda directa

Reglaj manual prin surub cu cap  
hexagonal

Montaj de traseu sau incorporat

## CARACTERISTICI TEHNICE

### GENERALE

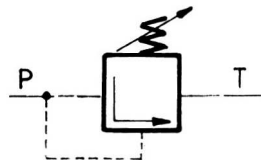
Prindere :pe teava sau incorporate in bloc

Pozitia de montaj : indiferenta

Sensul de curgere : P ->T

Temperatura mediului ambiant : -20°C.....+50°C

Schema functionala



P-intrare  
T-iesire

### HIDRAULIC

Presiune nominala : 315 bar

Presiune pe retur (orificiul T) : max 315 bar

Fluid :

Tipul fluidului : ulei mineral aditivat .

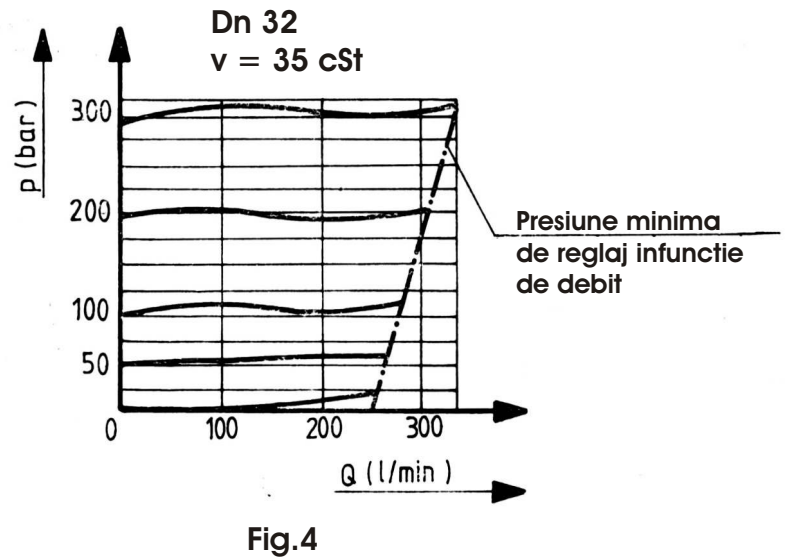
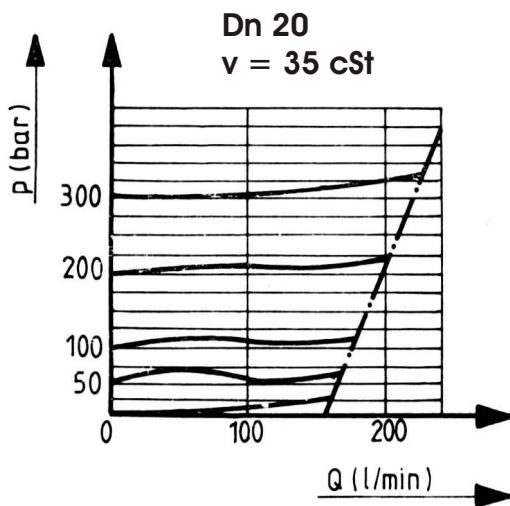
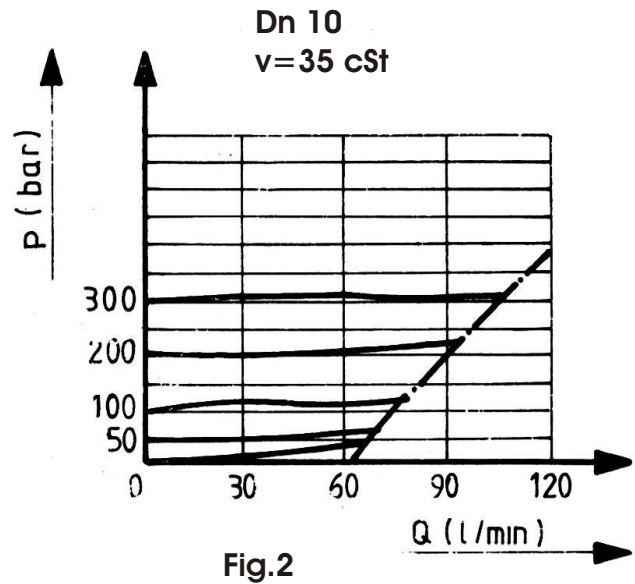
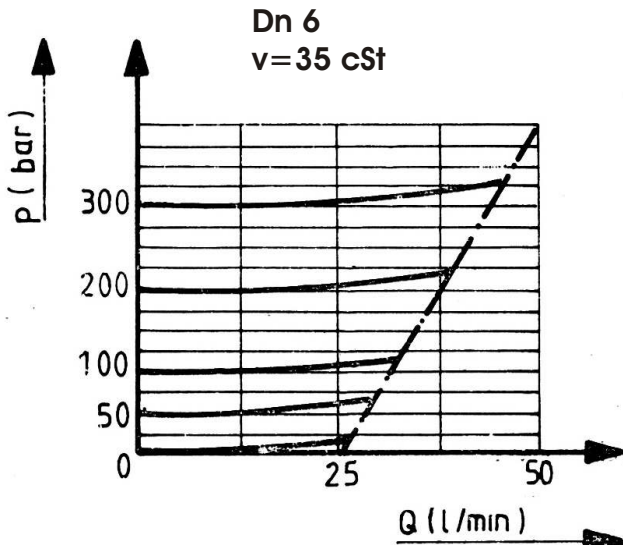
Domeniul de viscozitate : 10 ...380 cSt

Domeniul de temperatura : -25°C.....+80°C

Filtrare: 25 - 30 μm

# CURBE CARACTERISTICE

Curbe caracteristice de reglare si domeniul de utilizare:



## DIMENSIUNI

Supape tip cartus

Tabel 1

DN	Masa	L1	L2	hex 1	hex 2	hex 3	D1	D2	D3	D4	D5	L3	L4	L5	L6	L7	L8	L9	L10	α1	α2
6	~ 0,4Kg	67,5	140	32	19	13	M28x1,5	25H9/6	15	24,9	15	19	30	35	45	56,5±0,55	65				15°
10	~ 0,5Kg	81	151,5	36	19	13	M35x1,5	32H9/10	18,5	31,9	18	23	35	41	52	67,5±0,75	80				90°
20	~ 1Kg	106	177	46	19	13	M45x1,5	40H9/20	24	39,9	21	27	45	54	70	91,5±0,85	110				20°
32	~ 2,2Kg	131	220	60	19	13	M60x 2	55H9/30	38,75	54,9	23	29	45	60	84	113,5±1,15	140				

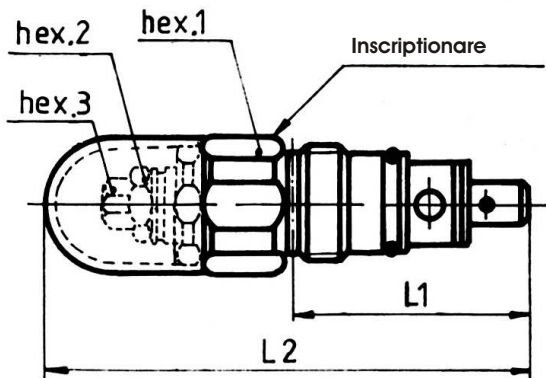


Fig. 5

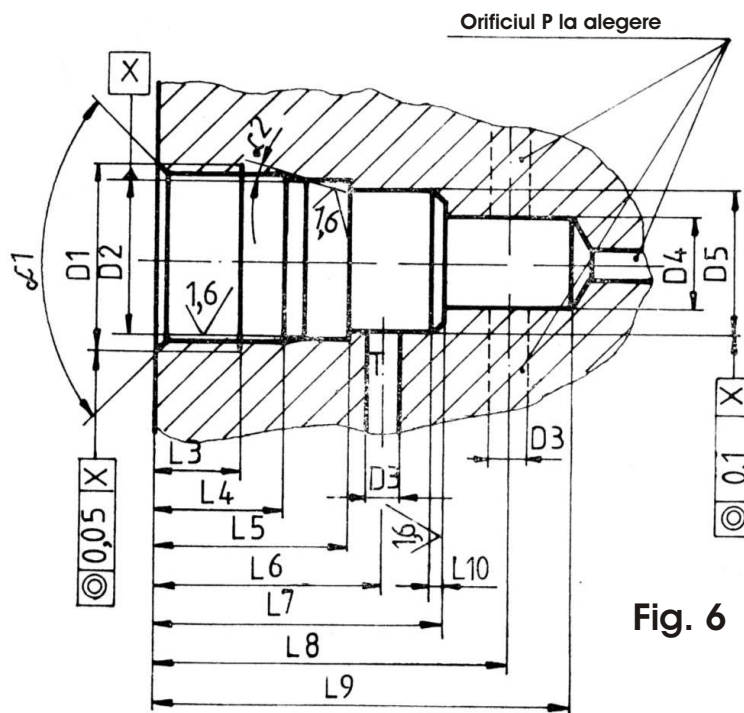


Fig. 6

### Supape tip traseu reglaj cu surub

DN	Masa	B1	B2	D1	D2	D3	D4	H1	H2	L1	L2	L3	L4	L5	L6
6	~1,8Kg	45	60	20	M14x1,5	M6	6,4	25	40	156	80	55	35	15	10
10	~4,0Kg	60	80	28	M22x1,5	M8	8,4	40	60	173	100	70	49	22	10
20	~7,0Kg	70	100	40	M33x2	M8	8,4	50	70	205	135	100	66	32	15
32	~14,5Kg	100	130	56	M48x2	M10	10,5	60	90	267	180	130	95	45	25

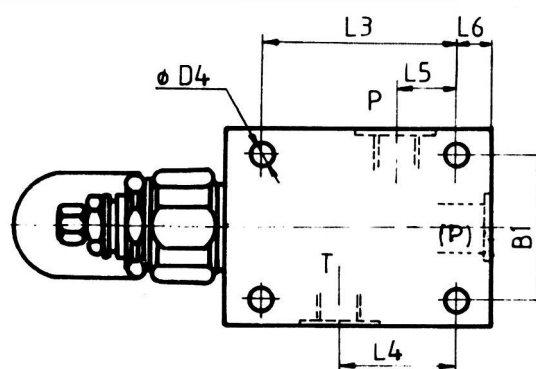
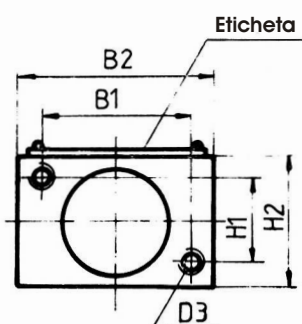
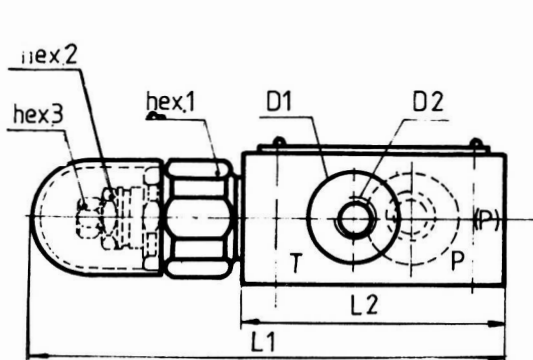


Fig. 7

## INDICATII DE MONTAJ

Supapele tip cartus se monteaza in blocuri hidraulice in locasuri conform Fig.6.Momentul de strangere al buchei filetate a supapei va fi de :  
DN6-11<sup>+1</sup> daNm ; DN10-13<sup>+1</sup> daNm ; DN20-17<sup>+1</sup> daNm ; DN32-20<sup>+1</sup> daNm  
Supapele de tip traseu se monteaza prin intermediul racordurilor, pe teville instalatiei hidraulice, utilizand numai unul sau ambele orificii P.

## COD DE COMANDA

**1 2 3-4.-5 6-7/\***

\*pentru varianta climatizata se adauga la sfrasitul codului/T1 sau T2

**1.SD-Supapa cu comanda directa**

**2.Tipul de montaj**

K-incorporat

T-traseu

**3.Diametru nominal 6,10,32,20**

**4.OO-Supapa de siguranta**

**5.Presiune maxima de reglaj**

1- 315 bar

4- 50 bar

7- 200 bar

8- 100 bar

**6.Tipul de reglaj**

S -cu surub

**7.O-seria de fabricatie:**